

Appendix A

Construction Programme

Project: Mainlaying in Tseung Kwan O

ID	Task Name	Duration	Start	Finish	Task Calendar	Predecessors	Successors	% Complete	Actual Start	Actual Finish																								
											4, 2017 Nov, Dec	2018 Qtr 1, 2018 Jan, Feb, Mar	Qtr 2, 2018 Apr, May, Jun	Qtr 3, 2018 Jul, Aug, Sep	Qtr 4, 2018 Oct, Nov, Dec	2019 Qtr 1, 2019 Jan, Feb, Mar	Qtr 2, 2019 Apr, May, Jun	Qtr 3, 2019 Jul, Aug, Sep	Qtr 4, 2019 Oct, Nov, Dec	2020 Qtr 1, 2020 Jan, Feb, Mar	Qtr 2, 2020 Apr, May, Jun	Qtr 3, 2020 Jul, Aug, Sep	Qtr 4, 2020 Oct, Nov, Dec	2021 Qtr 1, 2021 Jan, Feb, Mar	Qtr 2, 2021 Apr, May, Jun	Qtr 3, 2021 Jul, Aug, Sep	Qtr 4, 2021 Oct, Nov, Dec	2022 Qtr 1, 2022 Jan, Feb, Mar	Qtr 2, 2022 Apr, May, Jun	Qtr 3, 2022 Jul, Aug, Sep	Qtr 4, 2022 Oct, Nov, Dec	2023 Qtr 1, 2023 Jan, Feb, Mar	Qtr 2, 2023 Apr, May, Jun	Qtr 3, 2023 Jul, Aug, Sep
1	Key Dates	2420 days	7 Nov '17	22 Jun '24	Calendar Day			0%	7 Nov '17	NA																								
2	Contract Date	0 days	7 Nov '17	7 Nov '17	Calendar Day			36,28,29F	100%	7 Nov '17	7 Nov '17																							
3	Starting Date	0 days	16 Nov '17	16 Nov '17	Calendar Day				100%	16 Nov '17	16 Nov '17																							
4	Access Date of Portion A, B, C, D, E, F and G	0 days	16 Nov '17	16 Nov '17	Calendar Day			59,32,40,4	100%	16 Nov '17	16 Nov '17																							
5	Access Date of Portion H	0 days	10 Aug '19	10 Aug '19	Calendar Day			582	100%	10 Aug '19	10 Aug '19																							
6	Completion Date (Contract)	0 days	18 May '21	18 May '21	Calendar Day				100%	18 May '21	18 May '21																							
7	Revised Completion Date (Including EOT - CE01 & CE23)	0 days	11 Feb '22	11 Feb '22	Calendar Day				100%	11 Feb '22	11 Feb '22																							
8	Planned Completion	0 days	23 Jun '23	23 Jun '23	Calendar Day	10			0%	NA	NA																							
9	Defect Date	0 days	22 Jun '24	22 Jun '24	Calendar Day	10FS+365 days			0%	NA	NA																							
10	Mainlaying In Tseung Kwan O	2055 days	7 Nov '17	23 Jun '23	Calendar Day			9FS+365 d	35%	7 Nov '17	NA																							
11	Issue CE No. 01 - Change in Pressure Rating of Watermain, Valves and Fittings from PN16 to PN25	0 days	12 Jul '18	12 Jul '18	Calendar Day			37	100%	12 Jul '18	12 Jul '18																							
12	Issue CE No. 04 - Feasibility Study of Realignment of Pipeline between Po Hung Road and TKO Freshwater PSR	0 days	23 Aug '18	23 Aug '18	Calendar Day				100%	23 Aug '18	23 Aug '18																							
13	Issue CE No. 05 - Feasibility Study of Realignment of Pipeline at Tseung Kwan O Stage 1 Landfill	0 days	23 Aug '18	23 Aug '18	Calendar Day				100%	23 Aug '18	23 Aug '18																							
14	Issue CE No. 10 - Contractor Design of The Realignment	0 days	28 Feb '19	28 Feb '19	Calendar Day				100%	28 Feb '19	28 Feb '19																							
15	Issue CE No. 20 - Traffic Count and Preliminary Traffic Analysis in Po Lam Road and Tsui Lam Road	0 days	19 Jun '19	19 Jun '19	Calendar Day				100%	19 Jun '19	19 Jun '19																							
16	Issue CE No. 27 - Underground Utilities Detection Survey for Working Pit D (CH. A22+75)	0 days	2 Aug '19	2 Aug '19	Calendar Day				100%	2 Aug '19	2 Aug '19																							
17	Issue CE No. 21 - Temporary Diversion of Uncharted Underground Utilities near Wan O Road at CH. A16+00 (Pit B)	0 days	8 Aug '19	8 Aug '19	Calendar Day				100%	8 Aug '19	8 Aug '19																							
18	Issue CE No. 26 - Change in Cathodic Protection System for Mild Steel Pipes	0 days	16 Aug '19	16 Aug '19	Calendar Day			54	100%	16 Aug '19	16 Aug '19																							
19	Issue CE No. 35 - Feasibility Study on the Alternative Alignment by Trenchless Method in the Wan Po Road I/O Lohas Park Road	0 days	31 Dec '19	31 Dec '19	Calendar Day				100%	31 Dec '19	31 Dec '19																							
20	Issue CE No. 55 - Design of the Water Mains Structure and Associated Pipe Support across the Natural Stream Course for Alternative Alignment in Tsui Lam	0 days	5 May '20	5 May '20	Calendar Day				100%	5 May '20	5 May '20																							
21	Issue CE No. 56 - Excavation of Inspection Pits for the Alternative Alignment (Batch No. 2)	0 days	22 May '20	22 May '20	Calendar Day				100%	22 May '20	22 May '20																							
22	Issue CE No. 64 - Tree Survey at Tsui Lam (Location A and Location B)	0 days	9 Jun '20	9 Jun '20	Calendar Day				100%	9 Jun '20	9 Jun '20																							
23	Issue CE No. 62 - Design of Pipe Support in Tsui Lam (Location B)	0 days	16 Jun '20	16 Jun '20	Calendar Day				100%	16 Jun '20	16 Jun '20																							
24	Issue CE No. 66 - Excavation of Inspection Pits for the Alternative Alignment (Batch No. 3)	0 days	21 Aug '20	21 Aug '20	Calendar Day				100%	21 Aug '20	21 Aug '20																							
25	Preliminaries	1255 days	7 Nov '17	14 Apr '21	Calendar Day				80%	7 Nov '17	NA																							
26	Submission and Permit Application	322 days	7 Nov '17	24 Sep '18	Calendar Day				100%	7 Nov '17	24 Sep '18																							
38	Subcontracting	1122 days	16 Nov '17	11 Dec '20	Calendar Day				97%	16 Nov '17	NA																							
39	Submission and Approval	122 days	16 Nov '17	17 Mar '18	Calendar Day				100%	16 Nov '17	17 Mar '18																							
46	Subcontractor Selection and Subcontracting	1115 days	23 Nov '17	11 Dec '20	Calendar Day				97%	23 Nov '17	NA																							

Working Programme No. 11
Data Date : 15 Nov 2020

Task Split

Milestone Summary

Project Summary

Inactive Milestone

Manual Task

Manual Summary Rollup

Manual Summary

Start-only

Finish-only

External Tasks

External Milestone

Deadline

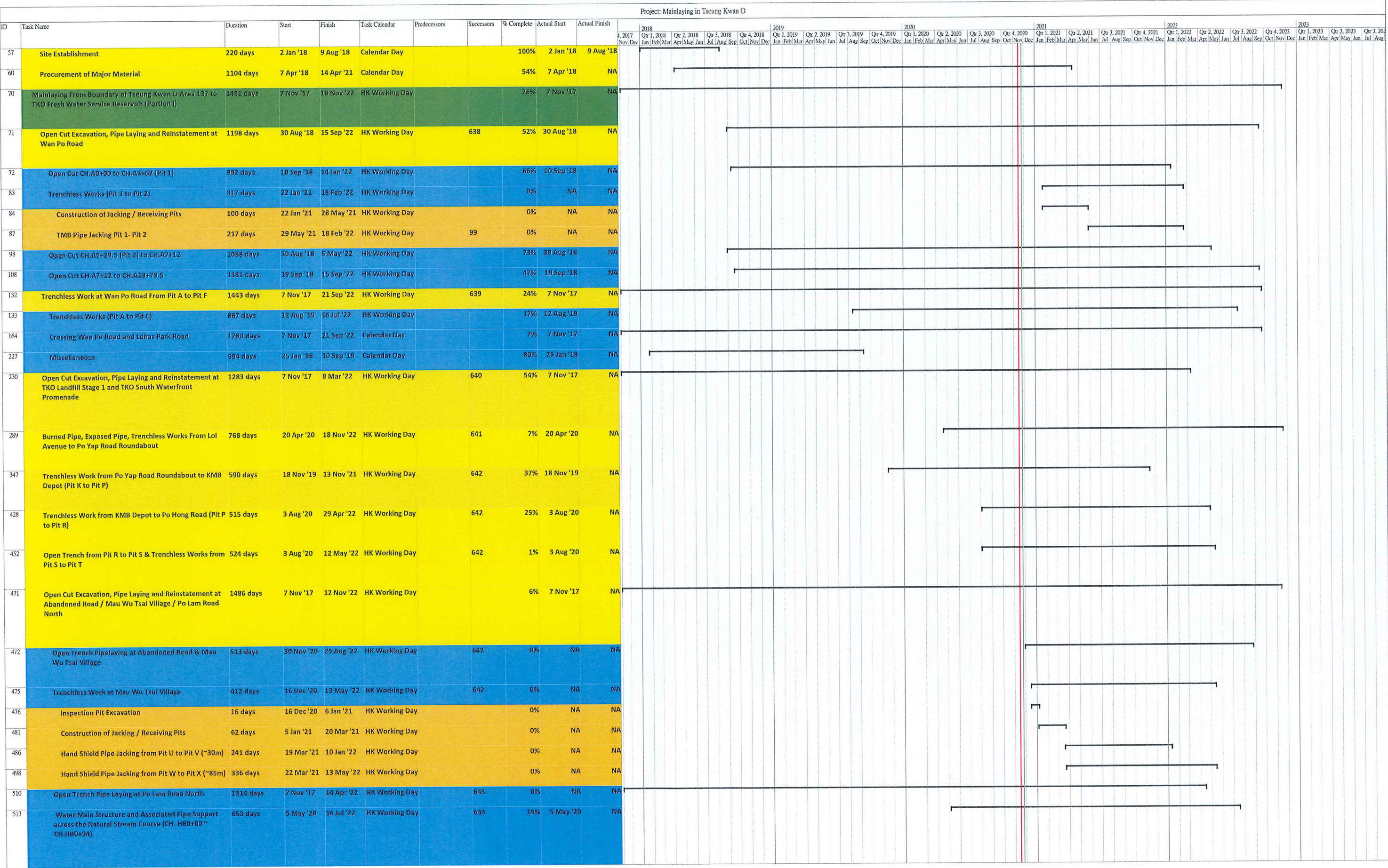
Critical

Critical Split

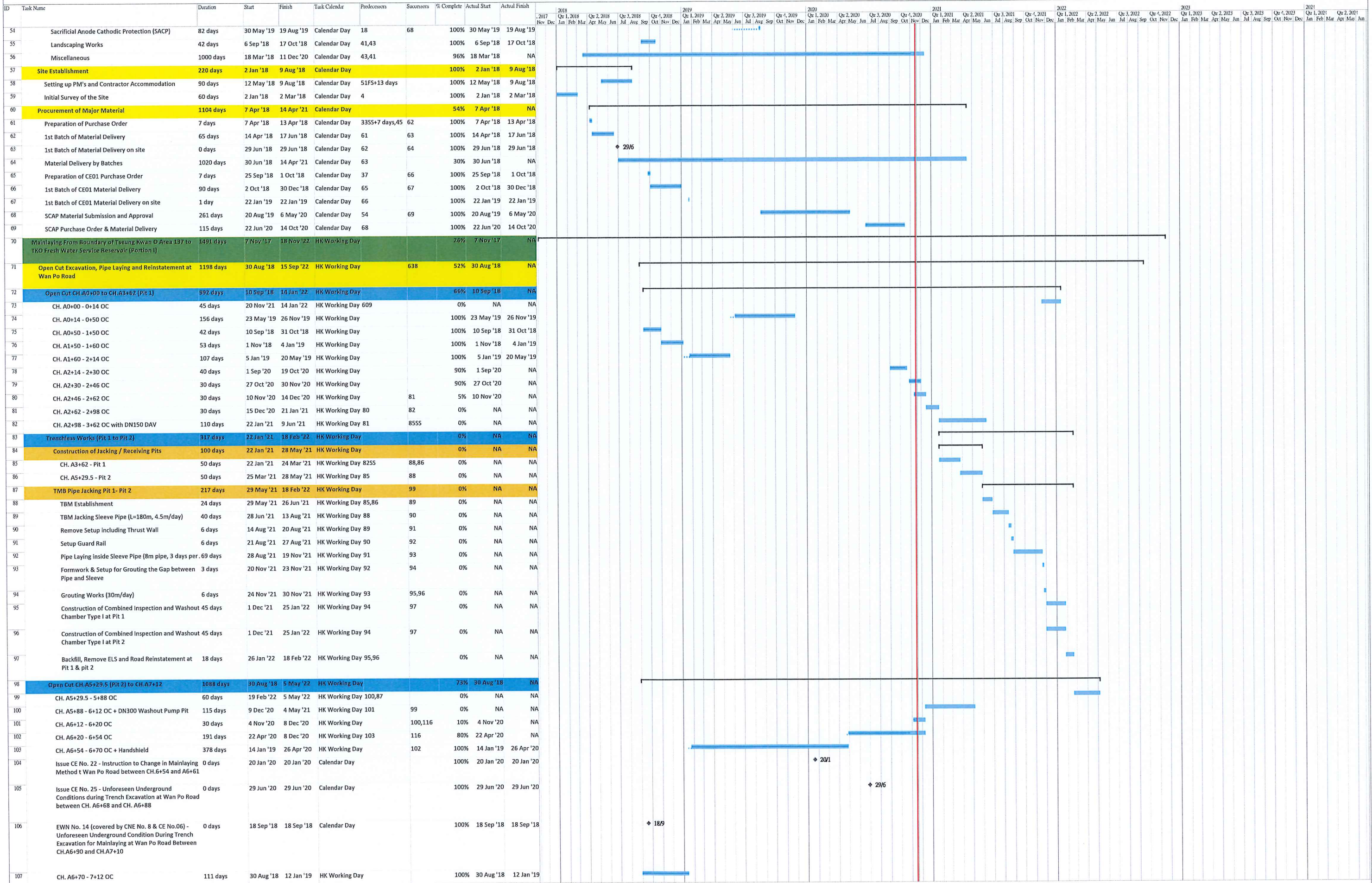
Manual Progress

Page 1

Project: Mainlaying in Tseung Kwan O																																					
ID	Task Name	Duration	Start	Finish	Task Calendar	Predecessors	Successors	% Complete	Actual Start	Actual Finish	4, 2017 Nov/Dec	2018				2019				2020				2021				2022				2023					
												Qtr 1, 2018 Jan/Feb/Dec	Qtr 2, 2018 Mar/Apr/May/Jan	Qtr 3, 2018 Jun/Jul/Aug/Sep	Qtr 4, 2018 Oct/Nov/Dec	Qtr 1, 2019 Jan/Feb/Mar	Qtr 2, 2019 Apr/May/Jun	Qtr 3, 2019 Jul/Aug/Sep	Qtr 4, 2019 Oct/Nov/Dec	Qtr 1, 2020 Jan/Feb/Mar	Qtr 2, 2020 Apr/May/Jun	Qtr 3, 2020 Jul/Aug/Sep	Qtr 4, 2020 Oct/Nov/Dec	Qtr 1, 2021 Jan/Feb/Mar	Qtr 2, 2021 Apr/May/Jun	Qtr 3, 2021 Jul/Aug/Sep	Qtr 4, 2021 Oct/Nov/Dec	Qtr 1, 2022 Jan/Feb/Mar	Qtr 2, 2022 Apr/May/Jun	Qtr 3, 2022 Jul/Aug/Sep	Qtr 4, 2022 Oct/Nov/Dec	Qtr 1, 2023 Jan/Feb/Mar	Qtr 2, 2023 Apr/May/Jun	Qtr 3, 2023 Jul/Aug			
534	Water Main Structure and Associated Pipe Support from Po Lam Road to Tsui Lam Road (CH. HD0+00 ~ CH. HD1+01)	702 days	16 Jun '20	27 Oct '22	HK Working Day		643	13%	16 Jun '20	NA																											
555	From Tsui Lam Road to TKO Freshwater PSR (CH. HE.0+00 ~ CH. HE2+00) & (CH.J0+00 CH.J0+57)	677 days	3 Aug '20	12 Nov '22	HK Working Day		643	0%	NA	NA																											
571	Final Connection to TKO Fresh Water Service Reservoir	30 days	22 Apr '22	28 May '22	HK Working Day			0%	NA	NA																											
574	Mainlaying In Tseung Kwan O Area 137 (Portion H)	1051 days	11 Dec '18	4 Jul '22	HK Working Day			59%	11 Dec '18	NA																											
635	DN1200 MS Pipe Static Pressure Test, Pipeline Cleaning, CCTV Inspection, Sterilization and Water Sampling	2048 days	7 Nov '17	16 Jun '23	Calendar Day			0%	NA	NA																											
636	Static Pressure Test	838 days	1 Nov '20	16 Feb '23	Calendar Day			0%	NA	NA																											
644	Pipeline Cleaning and CCTV Inspection	2018 days	7 Nov '17	17 May '23	Calendar Day		653FF+30	0%	NA	NA																											
652	Sterilization and Water Sampling	150 days	18 Jan '23	16 Jun '23	Calendar Day			0%	NA	NA																											
654	DN800 MS Pipe Static Pressure Test, Pipeline Cleaning, CCTV Inspection, Sterilization and Water Sampling	35 days	18 Mar '22	21 Apr '22	Calendar Day		572,573	0%	NA	NA																											
658	NS250 HDPE Pipe Static Pressure, Pipeling Cleaning, CCTV Inspection, Sterilization and Water Sampling	30 days	11 May '22	9 Jun '22	Calendar Day			0%	NA	NA																											
660	Handover Portion I and Portion H to WSD Region	379 days	10 Jun '22	23 Jun '23	Calendar Day			0%	NA	NA																											
663	Water Supply to Tseung Kwan O Desalination Plant at Fill Bank of Tseung Kwan O Area 137 (Portion J)	141 days	16 Nov '18	11 May '19	HK Working Day			100%	16 Nov '18	11 May '19																											



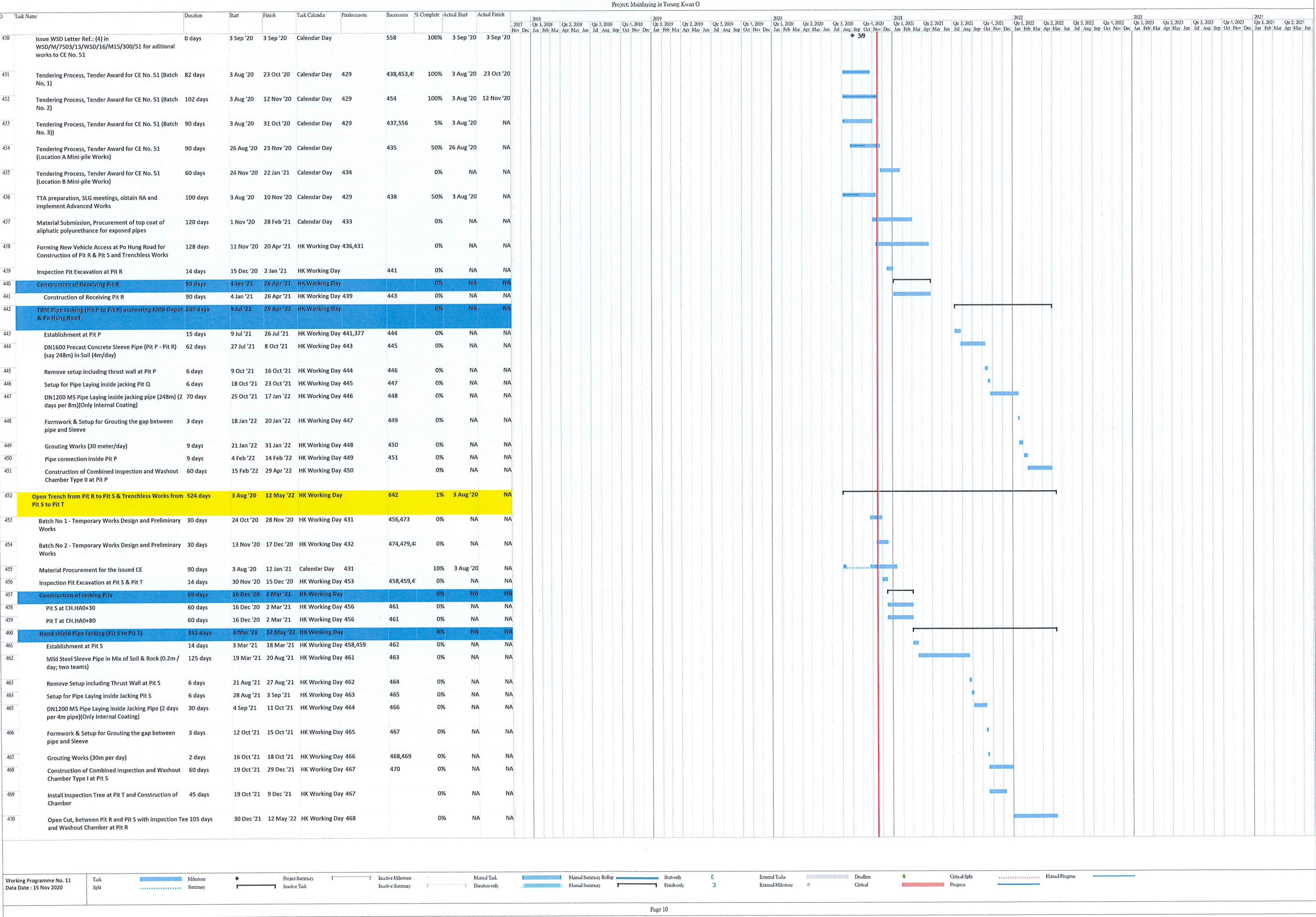
[illegible]



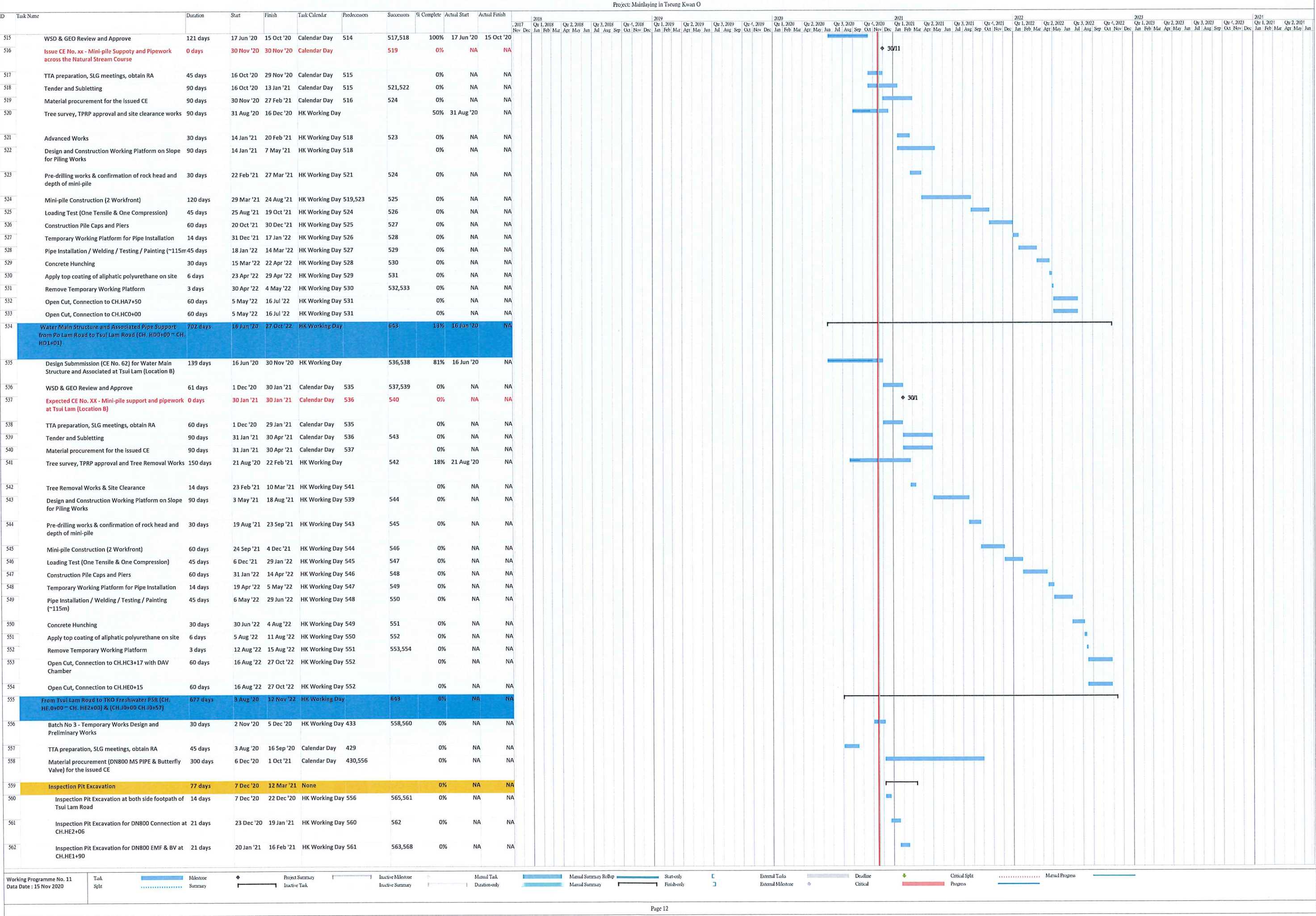
[illegible]

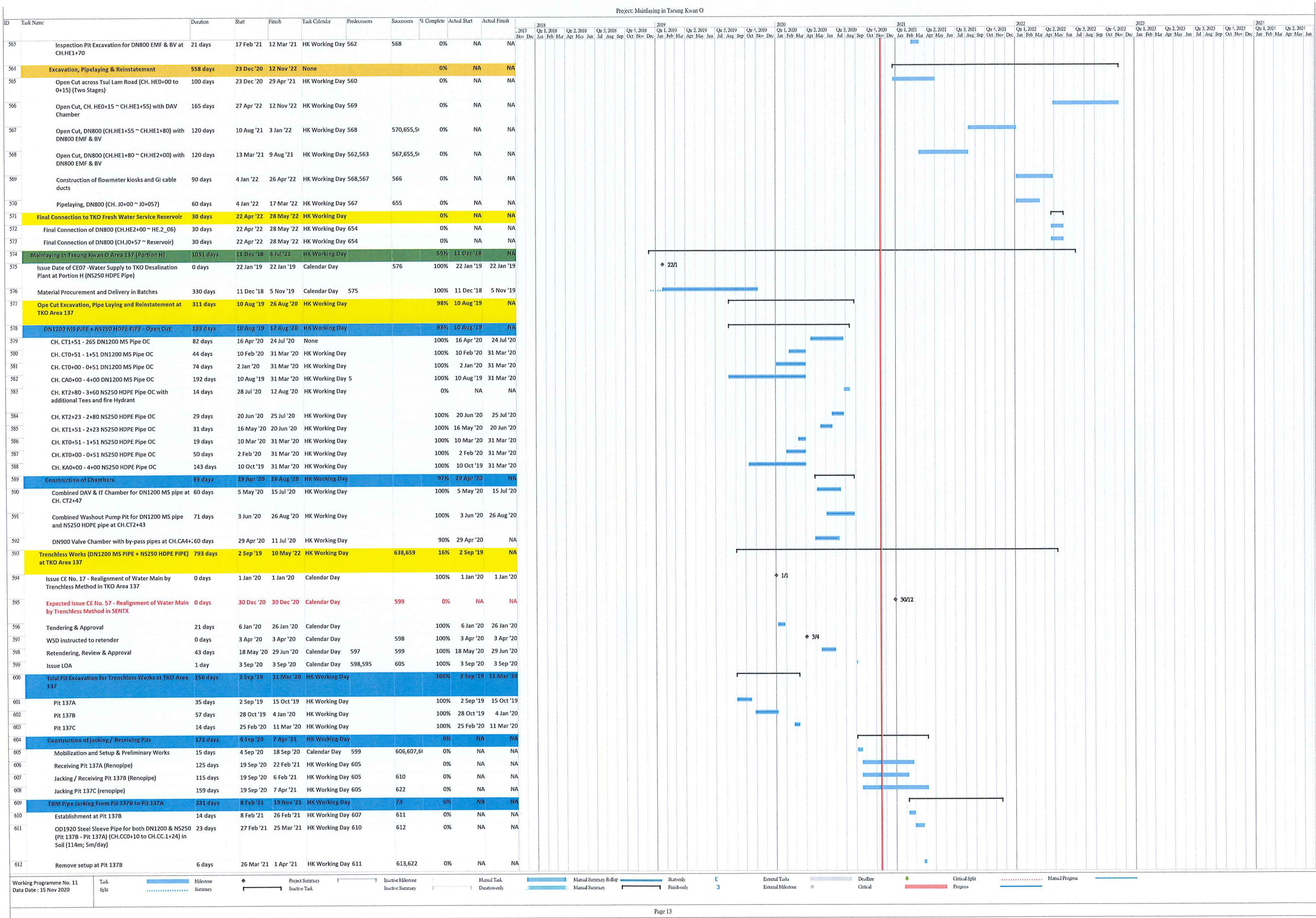
Working Programme No. 11		Task		Project Summary		Inactive Milestone		Manual Task		Manual Summary		Start-only		External Task		Deadline		Critical Split		Manual Progress	
Date: 15 Nov 2020		Split		Summary		Task		Summary		RollBack		Task		Task		Task		Task		Task	

[illegible]



[illegible]





[illegible]