

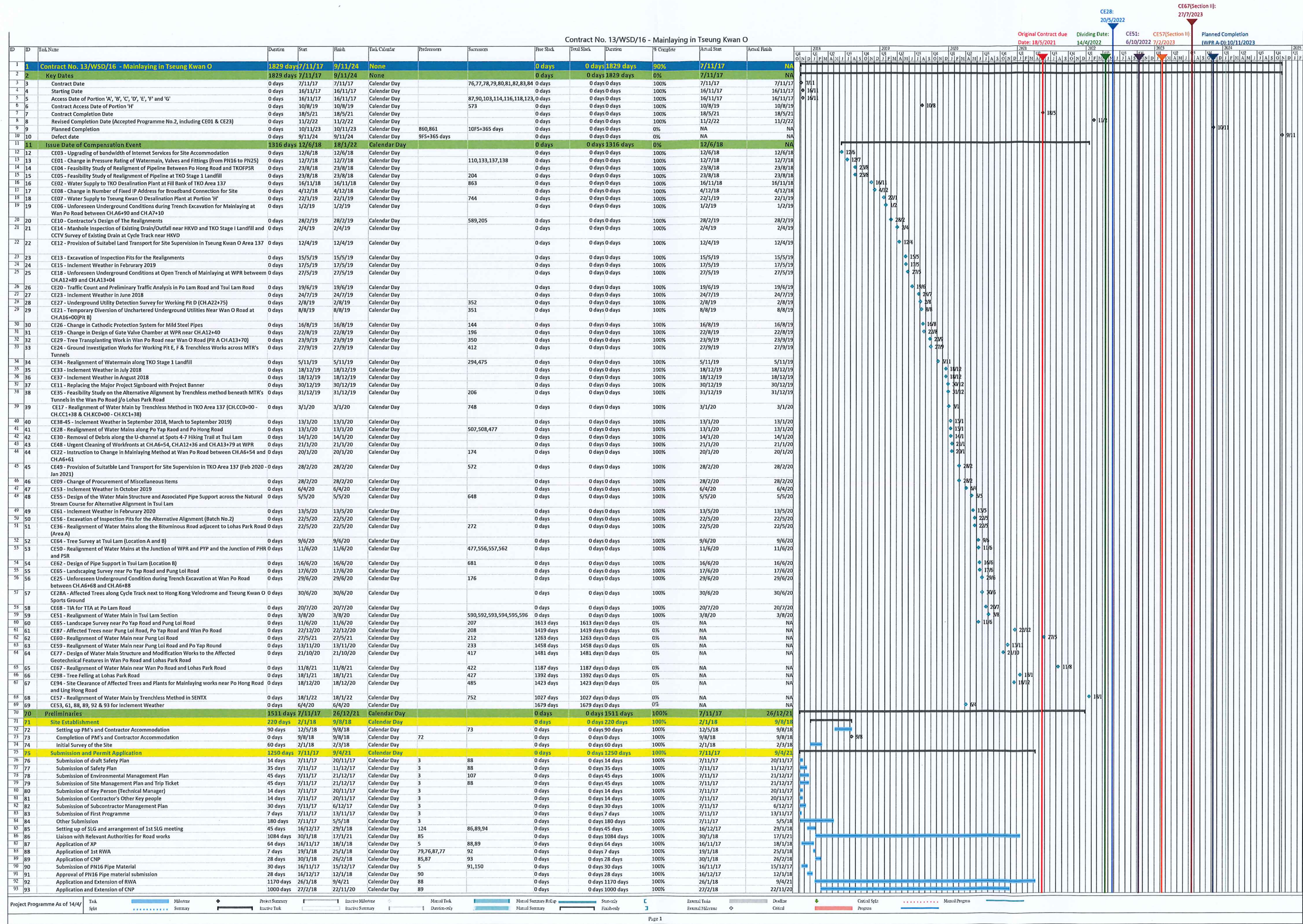


Appendix A

Master Programme

Penta Ocean – Concentric JV	 
Contract No. 13/WSD/16 Mainlaying in Tseung Kwan O	
Narrative for Project Programme (Rev. 17)	Date: 19 January 2024
	Page: 20

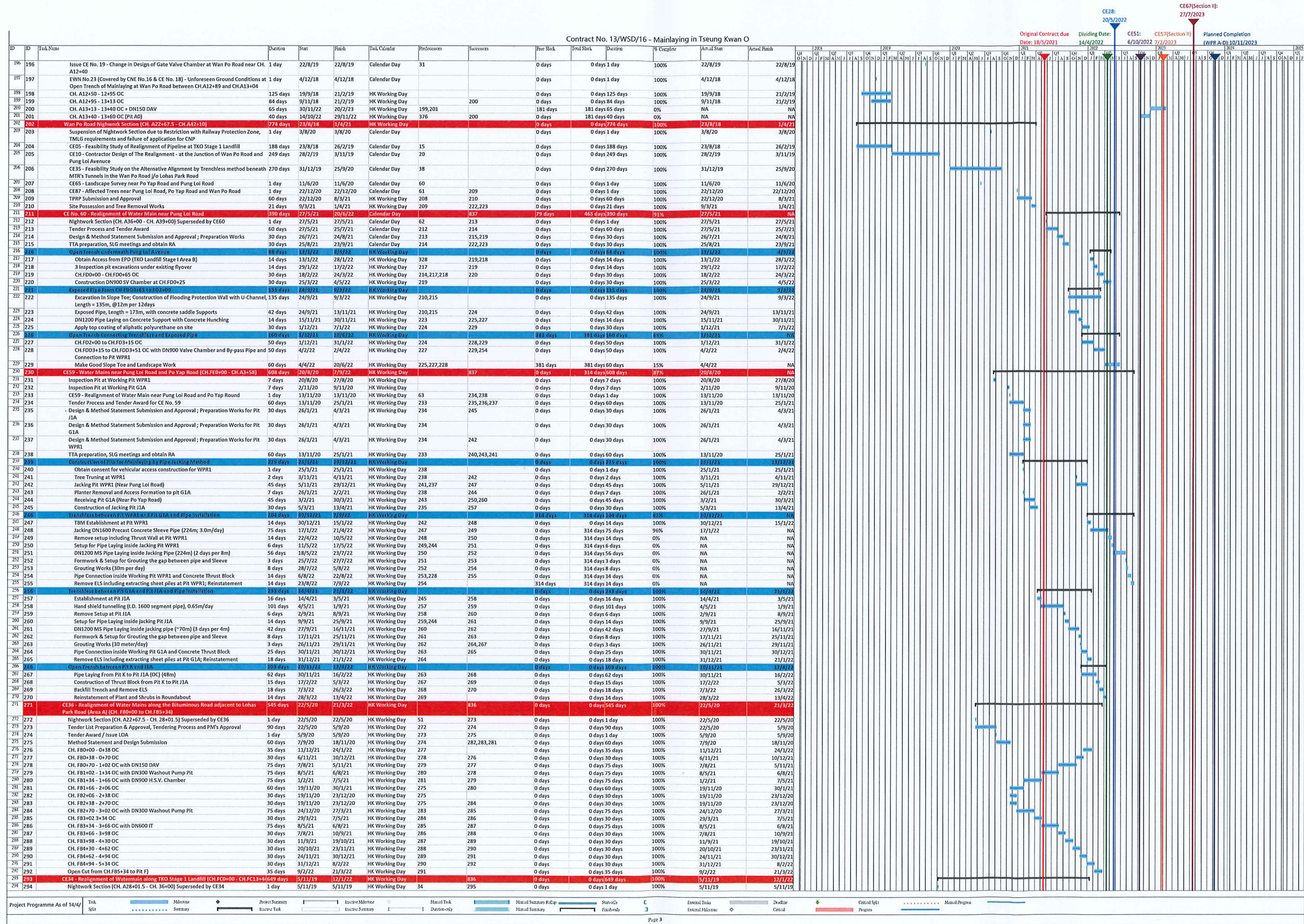
Full Project Programme



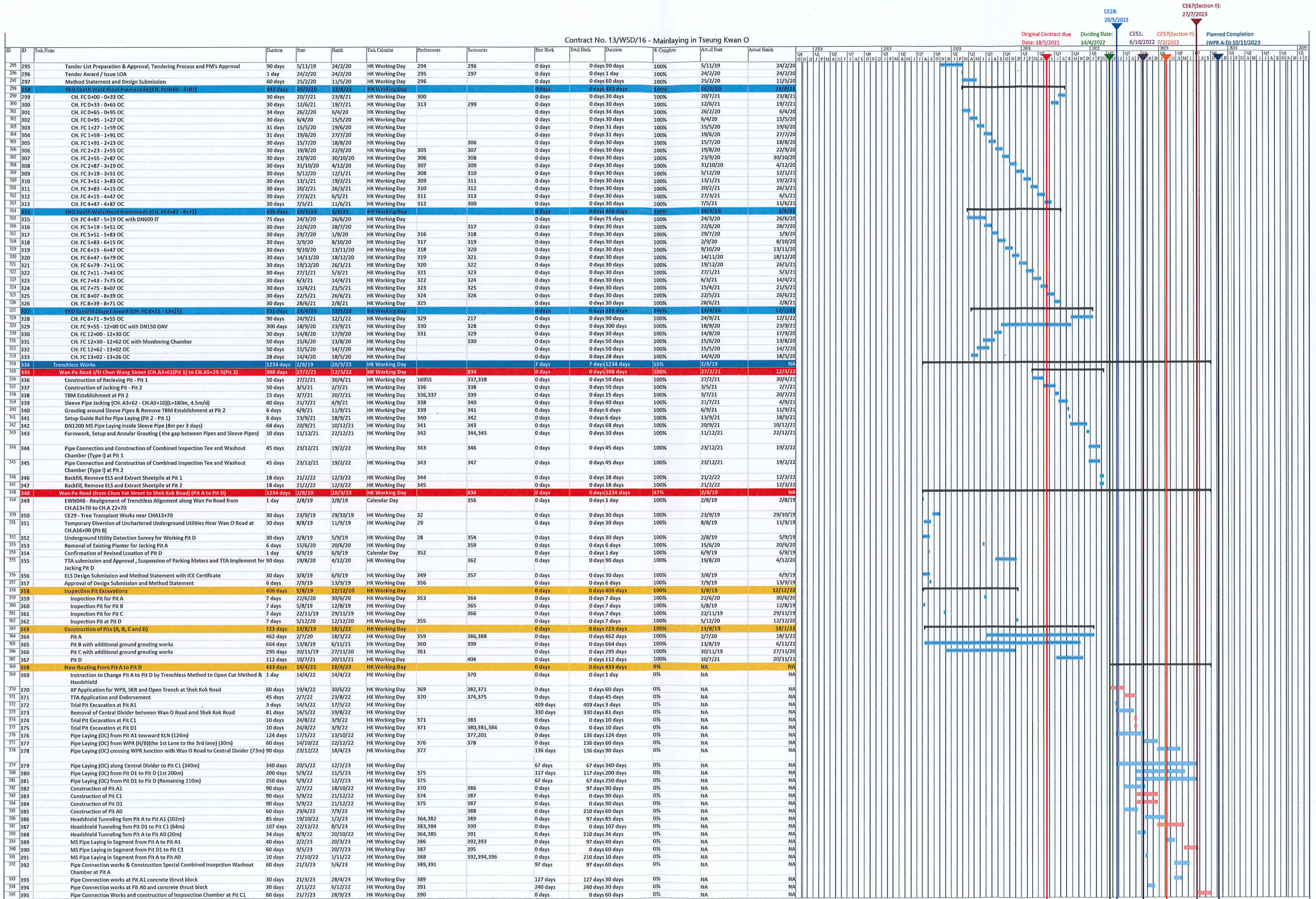
Project Programme As of 14/4/2023

Task Split Milestone Summary Project Summary Executive Task Inactive Milestone Inactive Summary Manual Task Duration-only Manual Summary Manual Summary Roll-up Manual Summary Store-only Finish-only External Tasks External Milestone Deadline Critical Critical Split Progress Manual Progress

Page 2



Contract No. 13/WSD/16 - Mainlaying in Tseung Kwan O

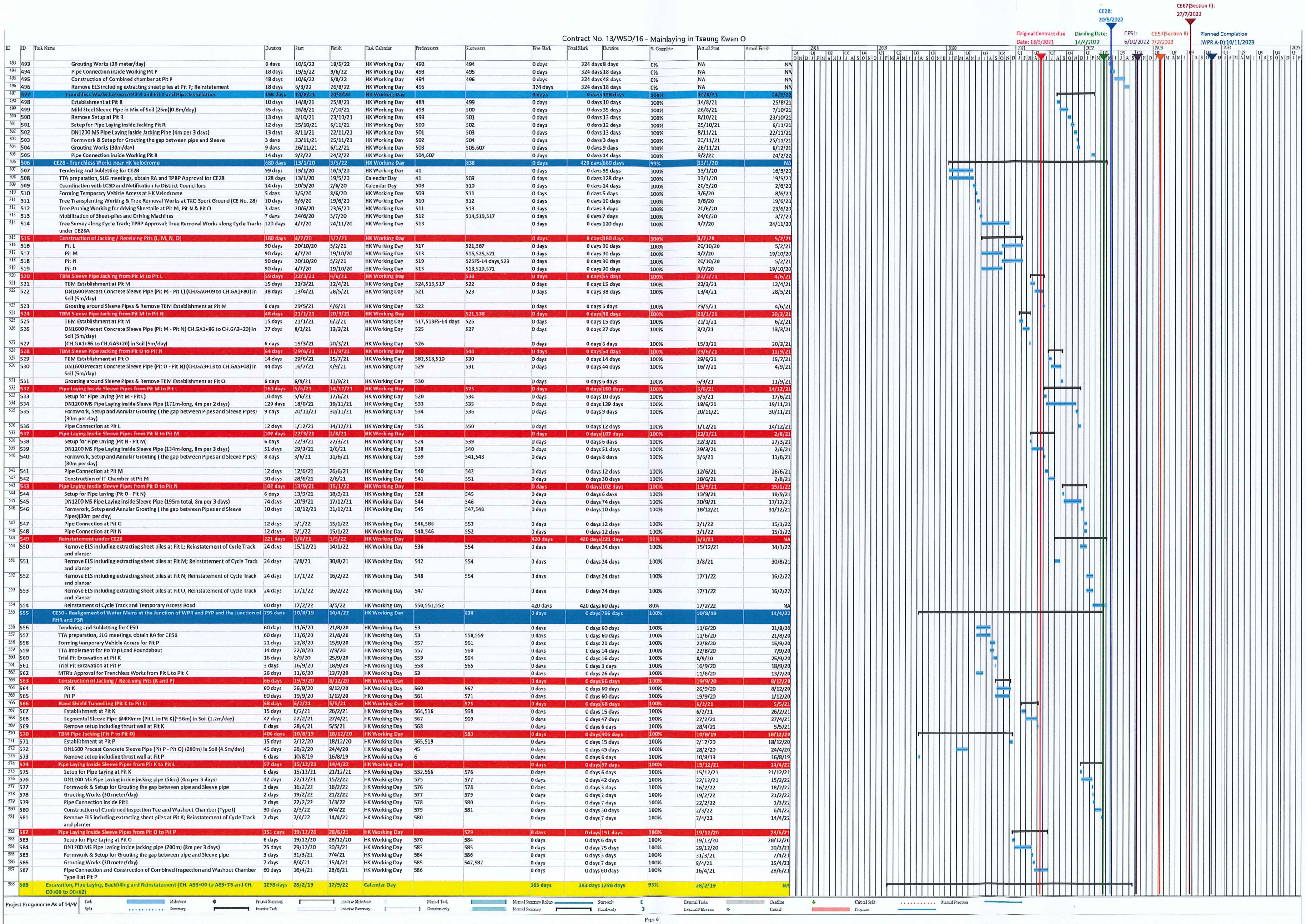


Contract No. 13/WSD/16 - Mainlaying in Tseung Kwan O

Original Contract due Date: 18/5/2021
Dividing Date: 14/4/2022
CE51: 6/10/2022
CE57(Section II): 7/2/2023
Planned Completion (WPR A-D): 10/11/2023

ID	ID	Task Name	Duration	Start	Finish	Task Calendar	Predecessors	Successors	Free Slack	Total Slack	Duration	% Complete	Actual Start	Actual Finish	2018	2019	2020	2021	2022	2023	2024	2025
396	396	Pipe Connection Works and Concrete Thrust Block at Pit D1	30 days	2/11/22	6/12/22	HK Working Day	391		240 days	240 days 30 days	0%	NA	NA	NA	Q1	Q2	Q3	Q4	Q1	Q2	Q3	Q4
397	397	Pipe Connection Works and construction of Washout Chamber at Pit D	30 days	18/11/22	22/12/22	HK Working Day	408,441	409	0 days	208 days 30 days	0%	NA	NA	NA	Q1	Q2	Q3	Q4	Q1	Q2	Q3	Q4
398	398	TBM Pipe Jacking (Pit B to Pit C) and Pipe Installation	202 days	8/11/21	16/7/22	HK Working Day			359 days	359 days 202 days	64%	8/11/21	NA	NA	Q1	Q2	Q3	Q4	Q1	Q2	Q3	Q4
399	399	TBM Establishment at Pit B with additional ground treatment for stopping water ingress	112 days	8/11/21	24/3/22	HK Working Day	365	400	0 days	0 days 112 days	100%	8/11/21	24/3/22	NA	Q1	Q2	Q3	Q4	Q1	Q2	Q3	Q4
400	400	Jacking DN1600 Precast Concrete Sleeve Pipe From Pit B to Pit C (L=326m; 2.5m/day)	30 days	25/3/22	4/5/22	HK Working Day	399	401	0 days	359 days 30 days	57%	25/3/22	NA	NA	Q1	Q2	Q3	Q4	Q1	Q2	Q3	Q4
401	401	Extracting TBM and remove TBM from Pit B	15 days	5/5/22	23/5/22	HK Working Day	400	402	0 days	359 days 15 days	0%	NA	NA	NA	Q1	Q2	Q3	Q4	Q1	Q2	Q3	Q4
402	402	ELS Removal and Reinstatement of Road works, Planter and Gullies' drains	45 days	24/5/22	16/7/22	HK Working Day	401		359 days	359 days 45 days	0%	NA	NA	NA	Q1	Q2	Q3	Q4	Q1	Q2	Q3	Q4
403	403	Pipe Jacking from Pit D to Pit C and Pipe Installation	341 days	22/11/21	16/1/23	HK Working Day			208 days	208 days 341 days	61%	22/11/21	NA	NA	Q1	Q2	Q3	Q4	Q1	Q2	Q3	Q4
404	404	TBM Establishment at Pit D	47 days	22/11/21	18/1/22	HK Working Day	367	405	0 days	0 days 47 days	100%	22/11/21	18/1/22	NA	Q1	Q2	Q3	Q4	Q1	Q2	Q3	Q4
405	405	DN1920 Steel Jacked Pipe (Pit D - Pit C) (CH.A19+26 to CH.A22+80) in Soil (370m; 2.5m/day)	51 days	19/1/22	22/3/22	HK Working Day	404		0 days	0 days 51 days	100%	19/1/22	22/3/22	NA	Q1	Q2	Q3	Q4	Q1	Q2	Q3	Q4
406	406	Pipe Jacking stopped on 23/3/2022	1 day	23/3/22	23/3/22	HK Working Day			0 days	0 days 1 day	100%	23/3/22	23/3/22	NA	Q1	Q2	Q3	Q4	Q1	Q2	Q3	Q4
407	407	Abandoned MTBM and Filling the Installed Sleeve Pipe with Grout	15 days	15/9/22	3/10/22	HK Working Day		408	0 days	216 days 15 days	0%	NA	NA	NA	Q1	Q2	Q3	Q4	Q1	Q2	Q3	Q4
408	408	Backfilling Pit D to formation level of washout pump pit	30 days	5/10/22	8/11/22	HK Working Day	407	397	8 days	216 days 30 days	0%	NA	NA	NA	Q1	Q2	Q3	Q4	Q1	Q2	Q3	Q4
409	409	ELS Removal and Reinstatement of Road works	18 days	23/12/22	16/1/23	HK Working Day	397		208 days	208 days 18 days	0%	NA	NA	NA	Q1	Q2	Q3	Q4	Q1	Q2	Q3	Q4
410	410	CE67 - Wan Po Road (From Shek Kwok Road to Lohas Park Road)	1126 days	27/9/19	19/7/23	HK Working Day	835		0 days	68 days 1126 days	63%	27/9/19	NA	NA	Q1	Q2	Q3	Q4	Q1	Q2	Q3	Q4
411	411	Suspension of Nightwork Section (CH.A22+70 to 24+00) due to Restriction with Railway Protection Zone and TMLG requirements	1 day	3/8/20	3/8/20	Calendar Day			0 days	0 days 1 day	100%	3/8/20	3/8/20	NA	Q1	Q2	Q3	Q4	Q1	Q2	Q3	Q4
412	412	CE24 - Tender List Prepare & Approval, Tendering Process and PM's Approval	70 days	27/9/19	5/12/19	Calendar Day	33	413	0 days	0 days 70 days	100%	27/9/19	5/12/19	NA	Q1	Q2	Q3	Q4	Q1	Q2	Q3	Q4
413	413	Coordination with MTR for Ground Investigation Works under MTR Tunnels	55 days	6/12/19	14/2/20	HK Working Day	412	414	0 days	0 days 55 days	100%	6/12/19	14/2/20	NA	Q1	Q2	Q3	Q4	Q1	Q2	Q3	Q4
414	414	Mobilization and Establishment of GI equipment	4 days	15/2/20	19/2/20	HK Working Day	413	415	0 days	0 days 4 days	100%	15/2/20	19/2/20	NA	Q1	Q2	Q3	Q4	Q1	Q2	Q3	Q4
415	415	Ground Investigation GI No. 3	30 days	20/2/20	25/3/20	HK Working Day	414	416	0 days	0 days 30 days	100%	20/2/20	25/3/20	NA	Q1	Q2	Q3	Q4	Q1	Q2	Q3	Q4
416	416	PM review the Alignment and Profiles and Obtain Consent from MTR for the decision of realignment	60 days	26/3/20	10/6/20	HK Working Day	415		0 days	0 days 60 days	100%	26/3/20	10/6/20	NA	Q1	Q2	Q3	Q4	Q1	Q2	Q3	Q4
417	417	Issue CE No. 77 - Design of Water Main Structure and Modification Works to the Affected Geotechnical Features in Wan Po Road and Lohas Park Road	1 day	21/10/20	21/10/20	HK Working Day	64	418	0 days	0 days 1 day	100%	21/10/20	21/10/20	NA	Q1	Q2	Q3	Q4	Q1	Q2	Q3	Q4
418	418	Quotation Submission and Acceptance for CE No. 77	161 days	21/10/20	10/5/21	HK Working Day	417	419	0 days	0 days 161 days	100%	21/10/20	10/5/21	NA	Q1	Q2	Q3	Q4	Q1	Q2	Q3	Q4
419	419	CE No. 77 - Submission of Geotechnical Assessment Report	42 days	11/5/21	30/6/21	HK Working Day	418	420	0 days	0 days 42 days	100%	11/5/21	30/6/21	NA	Q1	Q2	Q3	Q4	Q1	Q2	Q3	Q4
420	420	CE No. 77 - Design Submission	72 days	2/7/21	24/9/21	HK Working Day	419	421	0 days	0 days 72 days	100%	2/7/21	24/9/21	NA	Q1	Q2	Q3	Q4	Q1	Q2	Q3	Q4
421	421	CE No. 77 - Approval of Design Submission	1 day	24/9/21	24/9/21	HK Working Day	420	423	0 days	0 days 1 day	100%	24/9/21	24/9/21	NA	Q1	Q2	Q3	Q4	Q1	Q2	Q3	Q4
422	422	Issue CE No. 67 - Realignment of Water Main near Wan Po Road and Lohas Park Road	1 day	11/8/21	11/8/21	HK Working Day	65	424,425	0 days	0 days 1 day	100%	11/8/21	11/8/21	NA	Q1	Q2	Q3	Q4	Q1	Q2	Q3	Q4
423	423	Obtain MTR's approval on the alignment and construction method about MTR's tunnels	91 days	25/9/21	14/1/22	HK Working Day	421	450,451,452	0 days	0 days 91 days	100%	25/9/21	14/1/22	NA	Q1	Q2	Q3	Q4	Q1	Q2	Q3	Q4
424	424	Tender Process and Tender Award for CE No. 67	77 days	11/8/21	11/11/21	HK Working Day	422	466	0 days	0 days 77 days	100%	11/8/21	11/11/21	NA	Q1	Q2	Q3	Q4	Q1	Q2	Q3	Q4
425	425	TTA approval and Implement for CE No. 67	125 days	11/8/21	10/1/22	HK Working Day	422	430,431,450,451,452	0 days	0 days 125 days	100%	11/8/21	10/1/22	NA	Q1	Q2	Q3	Q4	Q1	Q2	Q3	Q4
426	426	Handshield Crossing Wan Po Road (CH.FA0+15 to CH.FA0+50)	543 days	18/1/21	17/11/22	HK Working Day			208 days	208 days 543 days	56%	18/1/21	NA	NA	Q1	Q2	Q3	Q4	Q1	Q2	Q3	Q4
427	427	Issue CE No. 98 - Tree Felling at Lohas Park Road	1 day	18/1/21	18/1/21	HK Working Day	66	428	0 days	0 days 1 day	100%	18/1/21	18/1/21	NA	Q1	Q2	Q3	Q4	Q1	Q2	Q3	Q4
428	428	TPRP Submission and Approval for Tree at Slope Feature 125W-A/FR102	121 days	18/1/21	18/6/21	HK Working Day	427	429	0 days	0 days 121 days	100%	18/1/21	18/6/21	NA	Q1	Q2	Q3	Q4	Q1	Q2	Q3	Q4
429	429	Tree Felling and Tree Works at Slope Feature 125W-A/FR102	7 days	19/6/21	26/6/21	HK Working Day	428	430	0 days	0 days 7 days	100%	19/6/21	26/6/21	NA	Q1	Q2	Q3	Q4	Q1	Q2	Q3	Q4
430	430	Strengthen Works at Feature 125W-A/R27	90 days	11/1/22	4/5/22	HK Working Day	429,425	432	0 days	194 days 90 days	86%	11/1/22	NA	NA	Q1	Q2	Q3	Q4	Q1	Q2	Q3	Q4
431	431	Strengthen Works at Feature 125W-A/R28	90 days	11/1/22	4/5/22	HK Working Day	425	433	0 days	194 days 90 days	86%	11/1/22	NA	NA	Q1	Q2	Q3	Q4	Q1	Q2	Q3	Q4
432	432	Concrete Coring and forming a opening on retaining wall (R27)	30 days	5/5/22	10/6/22	HK Working Day	430	434	0 days	194 days 30 days	0%	NA	NA	NA	Q1	Q2	Q3	Q4	Q1	Q2	Q3	Q4
433	433	Concrete Coring and forming a opening on retaining wall (R28)	30 days	5/5/22	10/6/22	HK Working Day	431	434	0 days	194 days 30 days	0%	NA	NA	NA	Q1	Q2	Q3	Q4	Q1	Q2	Q3	Q4
434	434	Handshield Establishment	14 days	11/6/22	27/6/22	HK Working Day	432,433	435	0 days	194 days 14 days	0%	NA	NA	NA	Q1	Q2	Q3	Q4	Q1	Q2	Q3	Q4
435	435	Mild Steel Segment Rings in Soil Mix (35m; 0.4m/day)	58 days	28/6/22	3/9/22	HK Working Day	434	436	0 days	194 days 58 days	0%	NA	NA	NA	Q1	Q2	Q3	Q4	Q1	Q2	Q3	Q4
436	436	Remove establishment	6 days	5/9/22	10/9/22	HK Working Day	435	437	0 days	194 days 6 days	0%	NA	NA	NA	Q1	Q2	Q3	Q4	Q1	Q2	Q3	Q4
437	437	Setup for Pipe Laying inside jacking	6 days	13/9/22	19/9/22	HK Working Day	436	438	0 days	194 days 6 days	0%	NA	NA	NA	Q1	Q2	Q3	Q4	Q1	Q2	Q3	Q4
438	438	DN900 MS Pipe Laying inside jacking pipe (35m) (say 3 days per 8m)	15 days	20/9/22	8/10/22	HK Working Day	437	439	0 days	194 days 15 days	0%	NA	NA	NA	Q1	Q2	Q3	Q4	Q1	Q2	Q3	Q4
439	439	Formwork & Setup for Grouting the gap between pipe and Sleeve	6 days	10/10/22	15/10/22	HK Working Day	438	440	0 days	194 days 6 days	0%	NA	NA	NA	Q1	Q2	Q3	Q4	Q1	Q2	Q3	Q4
440	440	Grouting Works (30 meter/day)	4 days	17/10/22	20/10/22	HK Working Day	439	441,443	0 days	194 days 4 days	0%	NA	NA	NA	Q1	Q2	Q3	Q4	Q1	Q2	Q3	Q4
441	441	Pipe laying Works From Pit D to CH.FA0+15	24 days	21/10/22	17/11/22	HK Working Day	440	397	0 days	208 days 24 days	0%	NA	NA	NA	Q1	Q2	Q3	Q4	Q1	Q2	Q3	Q4
442	442	Vertical Pipes, Exposed Pipes & Buried Pipes above MTR Tunnels (CH.FA0+50 to CH.FA0+85)	316 days	23/10/22	15/7/23	HK Working Day			71 days	71 days 316 days	0%	NA	NA	NA	Q1	Q2	Q3	Q4	Q1	Q2	Q3	Q4
443	443	Vertical pipes with Concrete Surround	33 days	21/10/22	28/11/22	HK Working Day	440	444	0 days	194 days 33 days	0%	NA	NA	NA	Q1	Q2	Q3	Q4	Q1	Q2	Q3	Q4
444	444	Exposed pipes with concrete surround	30 days	29/11/22	5/1/23	HK Working Day	443	445	123 days	194 days 30 days	0%	NA	NA	NA	Q1	Q2	Q3	Q4	Q1	Q2	Q3	Q4
445	445	Open cut pipe laying with concrete surround	30 days	9/6/23	15/7/23	HK Working Day	444,462		71 days	71 days 30 days	0%	NA	NA	NA	Q1	Q2	Q3	Q4	Q1	Q2	Q3	Q4
446	446	Hand Shield Pipe Jacking crossing Lohas Park Road	314 days	19/5/22	8/6/23	HK Working Day			79 days	79 days 314 days	0%	NA	NA	NA	Q1	Q2	Q3	Q4	Q1	Q2	Q3	Q4
447	447	MTR Consent for Construction of Pit E	0 days	19/5/22	19/5/22	Calendar Day		450	0 days	436 days 0 days	0%	NA	NA	NA	Q1	Q2	Q3	Q4	Q1	Q2	Q3	Q4
448	448	MTR Consent for Construction of Pit F	0 days	1/6/22	1/6/22	Calendar Day		451	0 days	82 days 0 days	0%	NA	NA	NA	Q1	Q2	Q3	Q4	Q1	Q2	Q3	Q4
449	449	MTR Consent for Construction of Pit G	0 days	6/6/22	6/6/22	Calendar Day		452	0 days	418 days 0 days	0%	NA	NA	NA	Q1	Q2	Q3	Q4	Q1	Q2	Q3	Q4
450	450	Construction of Receiving Pit E	60 days	19/5/22	29/7/22	HK Working Day	423,425,447		355 days	355 days 60 days	0%	NA	NA	NA	Q1	Q2	Q3	Q4	Q1	Q2	Q3	Q4
451	451	Construction of Jacking Pit F	60 days	1/6/22	11/8/22	HK Working Day	423,425,448	453	0 days	68 days 60 days	0%	NA	NA	NA	Q1	Q2	Q3	Q4	Q1	Q2	Q3	Q4
452	452	Construction of Receiving Pit G	60 days	6/6/22	15/8/22	HK Working Day	423,425,449		341 days	341 days 60 days	0%	NA	NA	NA	Q1	Q2	Q3	Q4	Q1	Q2	Q3	Q4
453	453	Establishment at Pit F	12 days	12/8/22	25/8/22	HK Working Day	451	454	0 days	68 days 12 days	0%	NA	NA	NA	Q1	Q2	Q3	Q4	Q1	Q2	Q3	Q4
454	454	Mild Steel Segment Rings (Pit F - Pit E) in Soil Mix (40m; 0.4m/day)	100 days	26/8/22	23/12/22	HK Working Day	453	455	0 days	68 days 100 days	0%	NA	NA	NA	Q1	Q2	Q3	Q4	Q1	Q2	Q3	Q4
455	455	Mild Steel Segment Rings (Pit F - Pit G) in Soil Mix (20m; 0.4m/day)	50 days	24/12/22	27/2/23	HK Working Day	454	456	0 days	68 days 50 days	0%	NA	NA	NA	Q1	Q2	Q3	Q4	Q1	Q2	Q3	Q

Contract No. 13/WSD/16 - Mainlaying in Tseung Kwan O



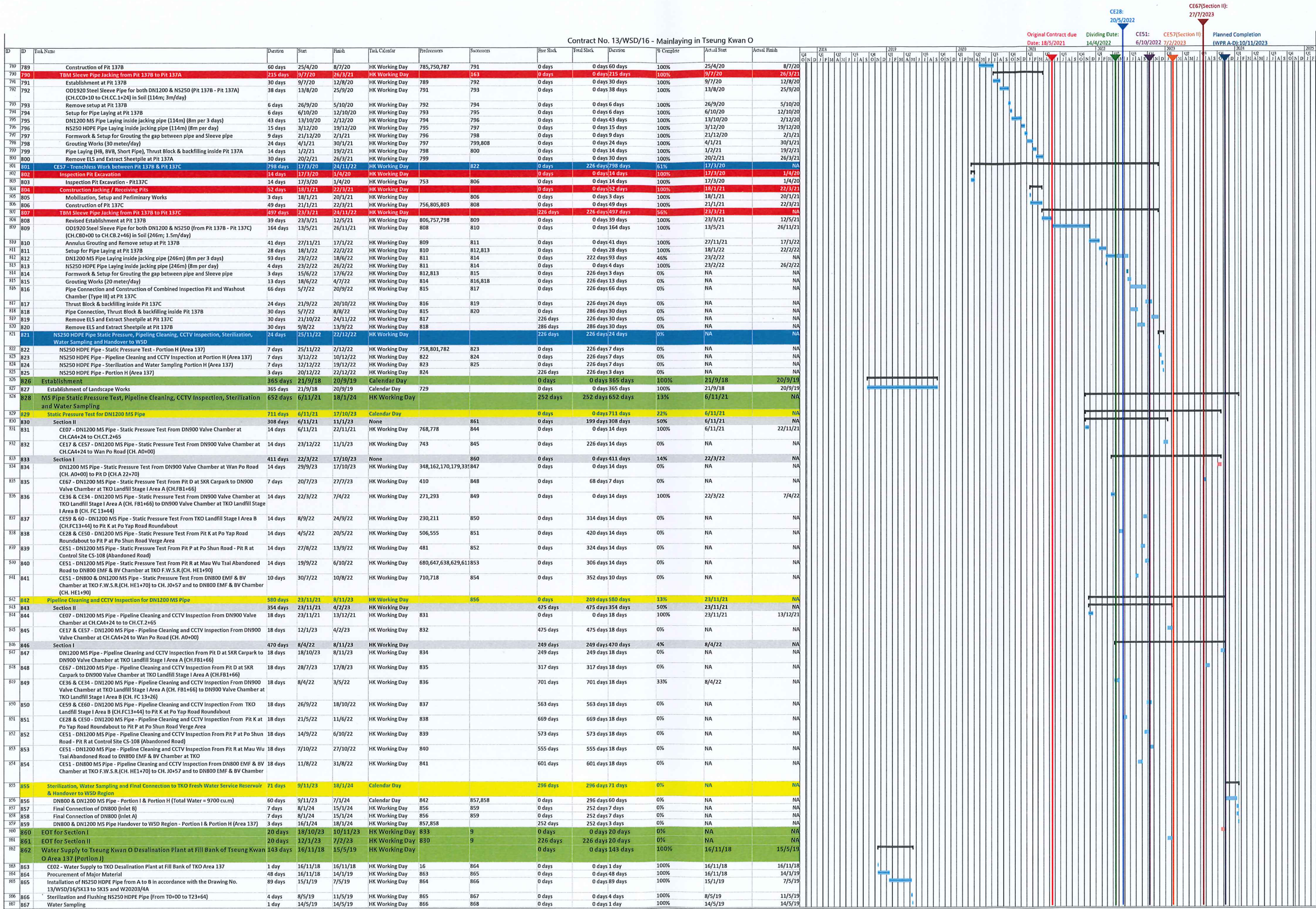
Contract No. 13/WSD/16 - Mainlaying in Tseung Kwan O

ID	Task Name	Duration	Start	Finish	Task Calendar	Predecessors	Successors	Free Slack	Total Slack	Duration	% Complete	Actual Start	Actual Finish																		
589	CE10 - Contractor's Design of The Realignments	1 day	28/2/19	28/2/19	Calendar Day	20		0 days	0 days 1 day	100%	28/2/19	28/2/19	28/2/19																		
590	Section (CH.A58+00 - CH.A83+76 and CH.D0+00 to D0+62) Superseded by CE51	1 day	3/8/20	3/8/20	Calendar Day	59		0 days	0 days 1 day	100%	3/8/20	3/8/20	3/8/20																		
591	CE51 - Realignment of Water Main in Tsui Lam Section	706 days	5/5/20	17/9/22	HK Working Day			310 days	310 days 706 days	93%	5/5/20	NA	NA																		
592	Material Procurement for CE51 (Including Additional DN800 M.S. Pipe, EMF and BV)	90 days	3/8/20	18/11/20	HK Working Day	59		0 days	0 days 90 days	100%	3/8/20	18/11/20	18/11/20																		
593	TTA preparation, SLG meetings, obtain RA	45 days	3/8/20	23/9/20	HK Working Day	59		0 days	0 days 45 days	100%	3/8/20	23/9/20	23/9/20																		
594	Tendering and Subletting (Batch 1 - Mau Wu Tsai Abandoned Road)	30 days	3/8/20	5/9/20	HK Working Day	59	597	0 days	0 days 30 days	100%	3/8/20	5/9/20	5/9/20																		
595	Tendering and Subletting (Batch 2 - Po Lam Road South to Location A)	30 days	3/8/20	5/9/20	HK Working Day	59	597	0 days	0 days 30 days	100%	3/8/20	5/9/20	5/9/20																		
596	Tendering and Subletting (Batch 3 - Location A to TKOPFWSR)(Excluding Piling Works)	30 days	3/8/20	5/9/20	HK Working Day	59	597,703,705,706	0 days	0 days 30 days	100%	3/8/20	5/9/20	5/9/20																		
597	Mobilization and Setup & Preliminary Works	14 days	7/9/20	22/9/20	HK Working Day	594,595,596	605,612,613,614	0 days	0 days 14 days	100%	7/9/20	22/9/20	22/9/20																		
598	Batch 1 - Mau Wu Tsai Abandoned Road	443 days	22/9/20	22/3/22	HK Working Day			0 days	0 days 443 days	100%	22/9/20	22/3/22	22/3/22																		
599	Issue EWN No. 241 for Tree Issue for Changing Trenchless (Pit 5 to Pit 7) to Open Cut 1 day at Control Site (CS-108)	1 day	24/11/20	24/11/20	Calendar Day			0 days	0 days 1 day	100%	24/11/20	24/11/20	24/11/20																		
600	Issue CE No. 121 - Non-explosive agent in Abandoned Road Near Mau Wu Tsai Village	1 day	25/6/21	25/6/21	Calendar Day			0 days	0 days 1 day	100%	25/6/21	25/6/21	25/6/21																		
601	Issue CE No. 70 - Landscaping Survey near Mau Wu Tsai Village	1 day	22/9/20	22/9/20	Calendar Day			0 days	0 days 1 day	100%	22/9/20	22/9/20	22/9/20																		
602	Issue CE No. 86 - Tree Affected in Mainlaying Works near Mau Wu Tsai Village	1 day	12/10/20	12/10/20	Calendar Day		603	0 days	0 days 1 day	100%	12/10/20	12/10/20	12/10/20																		
603	Tree survey, TPRP Submission and Receiving TPRP approval	295 days	12/10/20	9/10/21	HK Working Day	602	604,632	0 days	0 days 295 days	100%	12/10/20	9/10/21	9/10/21																		
604	Mobilization and Tree Removal	23 days	11/10/21	6/11/21	HK Working Day	603	606	0 days	0 days 23 days	100%	11/10/21	6/11/21	6/11/21																		
605	CH.HA0+80 to HA3+17 OC	141 days	23/9/20	16/3/21	HK Working Day	597	609	0 days	0 days 141 days	100%	23/9/20	16/3/21	16/3/21																		
606	Open Cut, CH.HA3+17 - CH.HA3+79	66 days	8/11/21	26/1/22	HK Working Day	604		0 days	0 days 66 days	100%	8/11/21	26/1/22	26/1/22																		
607	Open Cut, CH.HA0+28 - CH.HA0+48 with DAV Chamber (Connecting to Pit R)	49 days	7/12/21	8/2/22	HK Working Day	504,610	505,608	0 days	0 days 49 days	100%	7/12/21	8/2/22	8/2/22																		
608	Construction of DN900 Valve Chamber with by-pass at CH.HA0+44	36 days	9/2/22	22/3/22	HK Working Day	607		0 days	0 days 36 days	100%	9/2/22	22/3/22	22/3/22																		
609	Open Cut, CH.HA0+48 - CH.HA 1+20 OC with DN600 IT Chamber (Connecting to CH.HA0+80)	75 days	17/3/21	19/6/21	HK Working Day	605	610	0 days	0 days 75 days	100%	17/3/21	19/6/21	19/6/21																		
610	Construction of Wash Out Chamber & Reserved Tee at CH.HA0+49	36 days	21/6/21	2/8/21	HK Working Day	609	607	0 days	0 days 36 days	100%	21/6/21	2/8/21	2/8/21																		
611	Batch 2 - Po Lam Road South to Location A	401 days	23/9/20	29/1/22	HK Working Day		840	0 days	0 days 401 days	100%	23/9/20	29/1/22	29/1/22																		
612	Trial Pit Excavations at Pit W	14 days	23/9/20	10/10/20	HK Working Day	597	616	0 days	0 days 14 days	100%	23/9/20	10/10/20	10/10/20																		
613	Trial Pit Excavations at Pit X	14 days	23/9/20	10/10/20	HK Working Day	597	617	0 days	0 days 14 days	100%	23/9/20	10/10/20	10/10/20																		
614	CH.HA3+75 to HA5+55 OC (Depth < 2.5m, each stage of TTA 24-30m long)	1 day	23/9/20	23/9/20	HK Working Day	597		0 days	0 days 1 day	100%	23/9/20	23/9/20	23/9/20																		
615	Construction of Pits (W and X)	60 days	12/10/20	21/12/20	HK Working Day			0 days	0 days 60 days	100%	12/10/20	21/12/20	21/12/20																		
616	Pit W	60 days	12/10/20	21/12/20	HK Working Day	612	619	0 days	0 days 60 days	100%	12/10/20	21/12/20	21/12/20																		
617	Pit X	60 days	12/10/20	21/12/20	HK Working Day	613	619	0 days	0 days 60 days	100%	12/10/20	21/12/20	21/12/20																		
618	Hand shield Tunnelling and Pipe Installation (Pit W to Pit X)	327 days	22/12/20	29/1/22	HK Working Day			0 days	0 days 327 days	100%	22/12/20	29/1/22	29/1/22																		
619	Establishment at Pit W	14 days	22/12/20	9/1/21	HK Working Day	616,617	620	0 days	0 days 14 days	100%	22/12/20	9/1/21	9/1/21																		
620	Jacking Segmental Sleeve Pipe in Mix of Soil & Rock (0.8m /day)	107 days	11/1/21	25/5/21	HK Working Day	619	621	0 days	0 days 107 days	100%	11/1/21	25/5/21	25/5/21																		
621	Remove Setup including Thrust Wall at Pit X	6 days	26/5/21	1/6/21	HK Working Day	620	622	0 days	0 days 6 days	100%	26/5/21	1/6/21	1/6/21																		
622	Setup for Pipe Laying inside Jacking Pit X	6 days	2/6/21	8/6/21	HK Working Day	621	623	0 days	0 days 6 days	100%	2/6/21	8/6/21	8/6/21																		
623	DN1200 MS Pipe Laying inside Jacking Pipe (4m per 3 days)	64 days	9/6/21	24/8/21	HK Working Day	622	624	0 days	0 days 64 days	100%	9/6/21	24/8/21	24/8/21																		
624	Formwork & Setup for Grouting the gap between pipe and Sleeve pipe	3 days	25/8/21	27/8/21	HK Working Day	623	625	0 days	0 days 3 days	100%	25/8/21	27/8/21	27/8/21																		
625	Grouting Works (30m per day)	2 days	28/8/21	30/8/21	HK Working Day	624	626	0 days	0 days 2 days	100%	28/8/21	30/8/21	30/8/21																		
626	Open Cut, connecting CH. HA5+55 to DN1200 pipe end at Pit W	35 days	31/8/21	12/10/21	HK Working Day	625	627	0 days	0 days 35 days	100%	31/8/21	12/10/21	12/10/21																		
627	Open Cut, connecting CH. HA6+60 to DN1200 pipe end at Pit X with DN900 H.S.V. Chamber	90 days	13/10/21	29/1/22	HK Working Day	626		0 days	0 days 90 days	100%	13/10/21	29/1/22	29/1/22																		
628	Batch 3 - Location A to TKOPFWSR	706 days	5/5/20	17/9/22	HK Working Day			310 days	310 days 706 days	91%	5/5/20	NA	NA																		
629	Open Trench Pipe Laying at Po Lam Road (West Bound)	422 days	20/7/20	1/3/22	None		840	0 days	0 days 422 days	100%	20/7/20	1/3/22	1/3/22																		
630	Issue CE No. 68 - TTA for TTA at Po Lam Road	1 day	20/7/20	20/7/20	HK Working Day		631	0 days	0 days 1 day	100%	20/7/20	20/7/20	20/7/20																		
631	Traffic Review and Revise TTA, revised TTA Drawings, Obtain RA	177 days	20/7/20	20/2/21	HK Working Day	630	636	0 days	0 days 177 days	100%	20/7/20	20/2/21	20/2/21																		
632	Mobilization and Tree Removal	29 days	11/10/21	13/11/21	HK Working Day	603	633,634,635	0 days	0 days 29 days	100%	11/10/21	13/11/21	13/11/21																		
633	Construction of DAV Chamber at Pit X	41 days	15/11/21	4/1/22	HK Working Day	632		0 days	0 days 41 days	100%	15/11/21	4/1/22	4/1/22																		
634	Open Cut, from Pit X, CH.HA6+00 - CH.HA6+54	86 days	15/11/21	1/3/22	HK Working Day	632		0 days	0 days 86 days	100%	15/11/21	1/3/22	1/3/22																		
635	Construction of DN900 Valve Chamber and By Pass Pipes	17 days	15/11/21	3/12/21	HK Working Day	632		0 days	0 days 17 days	100%	15/11/21	3/12/21	3/12/21																		
636	Open Cut, CH.HA6+54 to CH.HA7+24 (Portion D2) with SACP	85 days	22/2/21	7/6/21	HK Working Day	631	637	0 days	0 days 85 days	100%	22/2/21	7/6/21	7/6/21																		
637	Open Cut, CH.HA7+24 - CH.HA7+61/CH.HB0+00 Excavation in Rock	189 days	8/6/21	22/1/22	HK Working Day	636		0 days	0 days 189 days	100%	8/6/21	22/1/22	22/1/22																		
638	Open Trench Pipe Laying at Po Lam Road (East Bound)	431 days	8/4/21	17/9/22	HK Working Day		840	0 days	306 days 431 days	76%	8/4/21	NA	NA																		
639	Open Cut, CH.HC0+00 - CH.HC0+08; Connecting to CH.HB	30 days	9/7/22	12/8/22	HK Working Day	676,644	640	0 days	306 days 30 days	0%	NA	NA	NA																		
640	Open Cut, CH.HC0+08 - CH.HC0+12	30 days	13/8/22	17/9/22	HK Working Day	676,639		306 days	306 days 30 days	0%	NA	NA	NA																		
641	Open Cut, CH.HC0+12 - CH.HC0+97 with SACP	104 days	16/6/21	19/10/21	HK Working Day		642	0 days	0 days 104 days	100%	16/6/21	19/10/21	19/10/21																		
642	Open Cut, CH.HC0+97 - CH.HC1+56(Portion B4) with SACP	62 days	23/11/21	9/2/22	HK Working Day	641,645	643	0 days	0 days 62 days	100%	23/11/21	9/2/22	9/2/22																		
643	Open Cut, CH.HC1+56 - CH.HC2+04	60 days	10/2/22	25/4/22	HK Working Day	642	644	0 days	306 days 60 days	90%	10/2/22	NA	NA																		
644	Open Cut, CH.HC2+04 - CH.HC2+70 with SACP	60 days	26/4/22	8/7/22	HK Working Day	643	639	0 days	306 days 60 days	0%	NA	NA	NA																		
645	Open Cut, CH.HC2+70 - CH.HC3+22 with SACP	58 days	13/9/21	22/11/21	HK Working Day	646	642	0 days	0 days 58 days	100%	13/9/21	22/11/21	22/11/21																		
646	Open Cut, CH.HC3+22 - CH.HC3+70 /CH.HD0+00	131 days	8/4/21	11/9/21	HK Working Day	645		0 days	0 days 131 days	100%	8/4/21	11/9/21	11/9/21																		
647	Water Main Structure and Associated Pipe Support across the Natural Stream Course (CH. HB0+00 ~ 0+94)	651 days	5/5/20	14/7/22	HK Working Day		840	55 days	361 days 651 days	93%	5/5/20	NA	NA																		
648	CESS - Design Submission for Water Main Structure and Associated Pipe Support across the Natural Stream Course	30 days	5/5/20	8/6/20	HK Working Day	48	649	0 days	0 days 30 days	100%	5/5/20	8/6/20	8/6/20																		
649	WSD & GEO Review and Approval	60 days	9/6/20	19/8/20	HK Working Day	648	650,651	0 days	0 days 60 days	100%	9/6/20	19/8/20	19/8/20																		
650	TTA preparation, SLG meetings, obtain RA	60 days	20/8/20	31/10/20	HK Working Day	649		0 days	0 days 60 days	100%	20/8/20	31/10/20	31/10/20																		
651	Tender and Subletting for Mini-piles, Construction Pile Caps and Piers	60 days	20/8/20	31/10/20	HK Working Day	649	652	0 days	0 days 60 days	100%	20/8/20	31/10/20	31/10/20																		
652	Material procurement referring to Approved Design Submission	90 days	2/11/20	20/2/21	HK Working Day	651	659,670	0 days	0 days 90 days	100%	2/11/20	20/2/21	20/2/21																		
653	CE No.85 - Affected Trees across the Natural Stream Course at Tsui Lam Location	1 day	28/10/20	28/10/20	Calendar Day		654	0 days	0 days 1 day	100%	28/10/20	28/10/20	28/10/20																		
654	Tree Survey, TPRP Submission and Approval	60 days	28/10/20	8/1/21	HK Working Day	653	656	0 days	0 days 60 days	100%	28/10/20	8/1/21	8/1/21																		
655	East Portion - Foundation Works (PC-C1, PC-T1 & PC-P1)	228 days	9/1/21	18/10/21	HK Working Day			0 days	0 days 228 days	100%	9/1/21	18/10/21	18/10/21																		
656	Mobilization and Tree Removal	24 days	9/1/21	5/2/21	HK Working Day	654	657	0 days	0 days 24 days	100%	9/1/21	5/2/21	5/2/21																		
657	Erect Temporary Timber Platform for Piling Works	7 days	6/2/21	17/2/21	HK Working Day	656	658	0 days	0 days 7 days	100%	6/2/21	17/2/21	17/2/21																		
658	Pre-drilling works (PD6, PD7 & PD8) & confirmation of rock head and depth of mini-pile	25 days	18/2/21	18/3/21	HK Working Day	657	659	0 days	0 days 25 days	100%	18/2/21	18/3/21	18/3/21																		
659	Mobilization and Driving Dia. 323mm steel Casting (14 nos)	38 days	19/3/21	7/5/21	HK Working Day	658,652	660	0 days	0 days 38 days	100%	19/3/21	7/5/21	7/5/21																		
660	Cleaning, Insert T50 reinforcement and Grouting	18 days	8/5/21	29/5/21	HK Working Day	659	661	0 days	0 days 18 days	100%	8/5/21	29/5/21	29/5/21																		
661	Setup and Loading Test of Mini-Pile (T-1)	24 days	31/5/21	28/6/21	HK Working Day	660	663,665	0 days	0 days 24 days	100%	31/5/21	28/6/21	28/6/21																		
662	Setup and Loading Test of Mini-Pile (C1-2)	24 days	20/8/21	16/9/21	HK Working Day	693	664,665	0 days	0 days 24 days	100%	20/8/21	16/9/21	16/9/21																		
663	Construction Pile Caps (T1) with Piers	24 days	29/6/21	27/7/21	HK Working Day	661	675	0 days	0 days 24 days	100%	29/6/21	27/7/21	27/7/21																		
664	Construction Pile Caps (C1) with Piers	24 days	17/9/21	18/10/21	HK Working Day	662	675	0 days	0 days 24 days	100%	17/9/21	18/10/21	18/10/21																		
665	Construction Pile Caps (P1) with Piers	24 days	17/9/21	18/10/21	HK Working Day	661,662	666,667,675	0 days	0 days 24 days	100%	17/9/21	18/10/21	18/10/21																		
666	West Portion - Foundation Works (PC-P2, PC-P3 & PC-C2)	157 days	19/10/21	30/4/22	HK Working Day	665		0 days	0 days 157 days	100%	19/10/21	30/4/22	30/4/22																		
667																															

Contract No. 13/WSD/16 - Mainlaying in Tseung Kwan O

ID	Task Name	Duration	Start	Finish	Task Calendar	Predecessors	Successors	Free Slack	Total Slack	Duration	% Complete	Actual Start	Actual Finish	Q1	Q2	Q3	Q4	Q1	Q2	Q3	Q4	Q1	Q2	Q3	Q4	Q1	Q2	Q3	Q4	Q1	Q2	Q3	Q4	Q1	Q2	Q3	Q4	Q1	Q2	Q3	Q4	Q1	Q2	Q3	Q4	Q1	Q2	Q3	Q4	Q1	Q2	Q3	Q4	Q1	Q2	Q3	Q4	Q1	Q2	Q3	Q4	Q1	Q2	Q3	Q4	Q1	Q2	Q3	Q4	Q1	Q2	Q3	Q4	Q1	Q2	Q3	Q4	Q1	Q2	Q3	Q4	Q1	Q2	Q3	Q4	Q1	Q2	Q3	Q4	Q1	Q2	Q3	Q4	Q1	Q2	Q3	Q4	Q1	Q2	Q3	Q4	Q1	Q2	Q3	Q4	Q1	Q2	Q3	Q4	Q1	Q2	Q3	Q4	Q1	Q2	Q3	Q4	Q1	Q2	Q3	Q4	Q1	Q2	Q3	Q4	Q1	Q2	Q3	Q4	Q1	Q2	Q3	Q4	Q1	Q2	Q3	Q4	Q1	Q2	Q3	Q4	Q1	Q2	Q3	Q4	Q1	Q2	Q3	Q4	Q1	Q2	Q3	Q4	Q1	Q2	Q3	Q4	Q1	Q2	Q3	Q4	Q1	Q2	Q3	Q4	Q1	Q2	Q3	Q4	Q1	Q2	Q3	Q4	Q1	Q2	Q3	Q4	Q1	Q2	Q3	Q4	Q1	Q2	Q3	Q4	Q1	Q2	Q3	Q4	Q1	Q2	Q3	Q4	Q1	Q2	Q3	Q4	Q1	Q2	Q3	Q4	Q1	Q2	Q3	Q4	Q1	Q2	Q3	Q4	Q1	Q2	Q3	Q4	Q1	Q2	Q3	Q4	Q1	Q2	Q3	Q4	Q1	Q2	Q3	Q4	Q1	Q2	Q3	Q4	Q1	Q2	Q3	Q4	Q1	Q2	Q3	Q4	Q1	Q2	Q3	Q4	Q1	Q2	Q3	Q4	Q1	Q2	Q3	Q4	Q1	Q2	Q3	Q4	Q1	Q2	Q3	Q4	Q1	Q2	Q3	Q4	Q1	Q2	Q3	Q4	Q1	Q2	Q3	Q4	Q1	Q2	Q3	Q4	Q1	Q2	Q3	Q4	Q1	Q2	Q3	Q4	Q1	Q2	Q3	Q4	Q1	Q2	Q3	Q4	Q1	Q2	Q3	Q4	Q1	Q2	Q3	Q4	Q1	Q2	Q3	Q4	Q1	Q2	Q3	Q4	Q1	Q2	Q3	Q4	Q1	Q2	Q3	Q4	Q1	Q2	Q3	Q4	Q1	Q2	Q3	Q4	Q1	Q2	Q3	Q4	Q1	Q2	Q3	Q4	Q1	Q2	Q3	Q4	Q1	Q2	Q3	Q4	Q1	Q2	Q3	Q4	Q1	Q2	Q3	Q4	Q1	Q2	Q3	Q4	Q1	Q2	Q3	Q4	Q1	Q2	Q3	Q4	Q1	Q2	Q3	Q4	Q1	Q2	Q3	Q4	Q1	Q2	Q3	Q4	Q1	Q2	Q3	Q4	Q1	Q2	Q3	Q4	Q1	Q2	Q3	Q4	Q1	Q2	Q3	Q4	Q1	Q2	Q3	Q4	Q1	Q2	Q3	Q4	Q1	Q2	Q3	Q4	Q1	Q2	Q3	Q4	Q1	Q2	Q3	Q4	Q1	Q2	Q3	Q4	Q1	Q2	Q3	Q4	Q1	Q2	Q3	Q4	Q1	Q2	Q3	Q4	Q1	Q2	Q3	Q4	Q1	Q2	Q3	Q4	Q1	Q2	Q3	Q4	Q1	Q2	Q3	Q4	Q1	Q2	Q3	Q4	Q1	Q2	Q3	Q4	Q1	Q2	Q3	Q4	Q1	Q2	Q3	Q4	Q1	Q2	Q3	Q4	Q1	Q2	Q3	Q4	Q1	Q2	Q3	Q4	Q1	Q2	Q3	Q4	Q1	Q2	Q3	Q4	Q1	Q2	Q3	Q4	Q1	Q2	Q3	Q4	Q1	Q2	Q3	Q4	Q1	Q2	Q3	Q4	Q1	Q2	Q3	Q4	Q1	Q2	Q3	Q4	Q1	Q2	Q3	Q4	Q1	Q2	Q3	Q4	Q1	Q2	Q3	Q4	Q1	Q2	Q3	Q4	Q1	Q2	Q3	Q4	Q1	Q2	Q3	Q4	Q1	Q2	Q3	Q4	Q1	Q2	Q3	Q4	Q1	Q2	Q3	Q4	Q1	Q2	Q3	Q4	Q1	Q2	Q3	Q4	Q1	Q2	Q3	Q4	Q1	Q2	Q3	Q4	Q1	Q2	Q3	Q4	Q1	Q2	Q3	Q4	Q1	Q2	Q3	Q4	Q1	Q2	Q3	Q4	Q1	Q2	Q3	Q4	Q1	Q2	Q3	Q4	Q1	Q2	Q3	Q4	Q1	Q2	Q3	Q4	Q1	Q2	Q3	Q4	Q1	Q2	Q3	Q4	Q1	Q2	Q3	Q4	Q1	Q2	Q3	Q4	Q1	Q2	Q3	Q4	Q1	Q2	Q3	Q4	Q1	Q2	Q3	Q4	Q1	Q2	Q3	Q4	Q1	Q2	Q3	Q4	Q1	Q2	Q3	Q4	Q1	Q2	Q3	Q4	Q1	Q2	Q3	Q4	Q1	Q2	Q3	Q4	Q1	Q2	Q3	Q4	Q1	Q2	Q3	Q4	Q1	Q2	Q3	Q4	Q1	Q2	Q3	Q4	Q1	Q2	Q3	Q4	Q1	Q2	Q3	Q4	Q1	Q2	Q3	Q4	Q1	Q2	Q3	Q4	Q1	Q2	Q3	Q4	Q1	Q2	Q3	Q4	Q1	Q2	Q3	Q4	Q1	Q2	Q3	Q4	Q1	Q2	Q3	Q4	Q1	Q2	Q3	Q4	Q1	Q2	Q3	Q4	Q1	Q2	Q3	Q4	Q1	Q2	Q3	Q4	Q1	Q2	Q3	Q4	Q1	Q2	Q3	Q4	Q1	Q2	Q3	Q4	Q1	Q2	Q3	Q4	Q1	Q2	Q3	Q4	Q1	Q2	Q3	Q4	Q1	Q2	Q3	Q4	Q1	Q2	Q3	Q4	Q1	Q2	Q3	Q4	Q1	Q2	Q3	Q4	Q1	Q2	Q3	Q4	Q1	Q2	Q3	Q4	Q1	Q2	Q3	Q4	Q1	Q2	Q3	Q4	Q1	Q2	Q3	Q4	Q1	Q2	Q3	Q4	Q1	Q2	Q3	Q4	Q1	Q2	Q3	Q4	Q1	Q2	Q3	Q4	Q1	Q2	Q3	Q4	Q1	Q2	Q3	Q4	Q1	Q2	Q3	Q4	Q1	Q2	Q3	Q4	Q1	Q2	Q3	Q4	Q1	Q2	Q3	Q4	Q1	Q2	Q3	Q4	Q1	Q2	Q3	Q4	Q1	Q2	Q3	Q4	Q1	Q2	Q3	Q4	Q1	Q2	Q3	Q4	Q1	Q2	Q3	Q4	Q1	Q2	Q3	Q4	Q1	Q2	Q3	Q4	Q1	Q2	Q3	Q4	Q1	Q2	Q3	Q4	Q1	Q2	Q3	Q4	Q1	Q2	Q3	Q4	Q1	Q2	Q3	Q4	Q1	Q2	Q3	Q4	Q1	Q2	Q3	Q4	Q1	Q2	Q3	Q4	Q1	Q2	Q3	Q4	Q1	Q2	Q3	Q4	Q1	Q2	Q3	Q4	Q1	Q2	Q3	Q4	Q1	Q2	Q3	Q4	Q1	Q2	Q3	Q4	Q1	Q2	Q3	Q4	Q1	Q2	Q3	Q4	Q1	Q2	Q3	Q4	Q1	Q2	Q3	Q4	Q1	Q2	Q3	Q4	Q1	Q2	Q3	Q4	Q1	Q2	Q3	Q4	Q1	Q2	Q3	Q4	Q1	Q2	Q3	Q4	Q1	Q2	Q3	Q4	Q1	Q2	Q3	Q4	Q1	Q2	Q3	Q4	Q1	Q2	Q3	Q4	Q1	Q2	Q3	Q4	Q1	Q2	Q3	Q4	Q1	Q2	Q3	Q4	Q1	Q2	Q3	Q4	Q1	Q2	Q3	Q4	Q1	Q2	Q3	Q4	Q1	Q2	Q3	Q4	Q1	Q2	Q3	Q4	Q1	Q2	Q3	Q4	Q1	Q2	Q3	Q4	Q1	Q2	Q3	Q4	Q1	Q2	Q3	Q4	Q1	Q2	Q3	Q4	Q1	Q2	Q3	Q4	Q1	Q2	Q3	Q4	Q1	Q2	Q3	Q4	Q1	Q2	Q3	Q4	Q1	Q2	Q3	Q4	Q1	Q2	Q3	Q4	Q1	Q2	Q3	Q4	Q1	Q2	Q3	Q4	Q1	Q2	Q3	Q4	Q1	Q2	Q3	Q4	Q1	Q2	Q3	Q4	Q1	Q2	Q3	Q4	Q1	Q2	Q3	Q4	Q1	Q2	Q3	Q4	Q1	Q2	Q3	Q4	Q1	Q2	Q3	Q4	Q1	Q2	Q3	Q4	Q1	Q2	Q3	Q4	Q1	Q2	Q3	Q4	Q1	Q2	Q3	Q4	Q1	Q2	Q3	Q4	Q1	Q2	Q3	Q4	Q1	Q2	Q3	Q4	Q1	Q2	Q3	Q4	Q1	Q2	Q3	Q4	Q1	Q2	Q3	Q4	Q1	Q2	Q3	Q4	Q1	Q2	Q3	Q4	Q1	Q2	Q3	Q4	Q1	Q2	Q3	Q4	Q1	Q2	Q3	Q4	Q1	Q2	Q3	Q4	Q1	Q2	Q3	Q4	Q1	Q2	Q3	Q4	Q1	Q2	Q3	Q4	Q1	Q2	Q3	Q4	Q1	Q2	Q3	Q4	Q1	Q2	Q3	Q4	Q1	Q2	Q3	Q4	Q1	Q2	Q3	Q4	Q1	Q2	Q3	Q4	Q1	Q2	Q3	Q4	Q1	Q2	Q3	Q4	Q1	Q2	Q3	Q4	Q1	Q2	Q3	Q4	Q1	Q2	Q3
----	-----------	----------	-------	--------	---------------	--------------	------------	------------	-------------	----------	------------	--------------	---------------	----	----	----	----	----	----	----	----	----	----	----	----	----	----	----	----	----	----	----	----	----	----	----	----	----	----	----	----	----	----	----	----	----	----	----	----	----	----	----	----	----	----	----	----	----	----	----	----	----	----	----	----	----	----	----	----	----	----	----	----	----	----	----	----	----	----	----	----	----	----	----	----	----	----	----	----	----	----	----	----	----	----	----	----	----	----	----	----	----	----	----	----	----	----	----	----	----	----	----	----	----	----	----	----	----	----	----	----	----	----	----	----	----	----	----	----	----	----	----	----	----	----	----	----	----	----	----	----	----	----	----	----	----	----	----	----	----	----	----	----	----	----	----	----	----	----	----	----	----	----	----	----	----	----	----	----	----	----	----	----	----	----	----	----	----	----	----	----	----	----	----	----	----	----	----	----	----	----	----	----	----	----	----	----	----	----	----	----	----	----	----	----	----	----	----	----	----	----	----	----	----	----	----	----	----	----	----	----	----	----	----	----	----	----	----	----	----	----	----	----	----	----	----	----	----	----	----	----	----	----	----	----	----	----	----	----	----	----	----	----	----	----	----	----	----	----	----	----	----	----	----	----	----	----	----	----	----	----	----	----	----	----	----	----	----	----	----	----	----	----	----	----	----	----	----	----	----	----	----	----	----	----	----	----	----	----	----	----	----	----	----	----	----	----	----	----	----	----	----	----	----	----	----	----	----	----	----	----	----	----	----	----	----	----	----	----	----	----	----	----	----	----	----	----	----	----	----	----	----	----	----	----	----	----	----	----	----	----	----	----	----	----	----	----	----	----	----	----	----	----	----	----	----	----	----	----	----	----	----	----	----	----	----	----	----	----	----	----	----	----	----	----	----	----	----	----	----	----	----	----	----	----	----	----	----	----	----	----	----	----	----	----	----	----	----	----	----	----	----	----	----	----	----	----	----	----	----	----	----	----	----	----	----	----	----	----	----	----	----	----	----	----	----	----	----	----	----	----	----	----	----	----	----	----	----	----	----	----	----	----	----	----	----	----	----	----	----	----	----	----	----	----	----	----	----	----	----	----	----	----	----	----	----	----	----	----	----	----	----	----	----	----	----	----	----	----	----	----	----	----	----	----	----	----	----	----	----	----	----	----	----	----	----	----	----	----	----	----	----	----	----	----	----	----	----	----	----	----	----	----	----	----	----	----	----	----	----	----	----	----	----	----	----	----	----	----	----	----	----	----	----	----	----	----	----	----	----	----	----	----	----	----	----	----	----	----	----	----	----	----	----	----	----	----	----	----	----	----	----	----	----	----	----	----	----	----	----	----	----	----	----	----	----	----	----	----	----	----	----	----	----	----	----	----	----	----	----	----	----	----	----	----	----	----	----	----	----	----	----	----	----	----	----	----	----	----	----	----	----	----	----	----	----	----	----	----	----	----	----	----	----	----	----	----	----	----	----	----	----	----	----	----	----	----	----	----	----	----	----	----	----	----	----	----	----	----	----	----	----	----	----	----	----	----	----	----	----	----	----	----	----	----	----	----	----	----	----	----	----	----	----	----	----	----	----	----	----	----	----	----	----	----	----	----	----	----	----	----	----	----	----	----	----	----	----	----	----	----	----	----	----	----	----	----	----	----	----	----	----	----	----	----	----	----	----	----	----	----	----	----	----	----	----	----	----	----	----	----	----	----	----	----	----	----	----	----	----	----	----	----	----	----	----	----	----	----	----	----	----	----	----	----	----	----	----	----	----	----	----	----	----	----	----	----	----	----	----	----	----	----	----	----	----	----	----	----	----	----	----	----	----	----	----	----	----	----	----	----	----	----	----	----	----	----	----	----	----	----	----	----	----	----	----	----	----	----	----	----	----	----	----	----	----	----	----	----	----	----	----	----	----	----	----	----	----	----	----	----	----	----	----	----	----	----	----	----	----	----	----	----	----	----	----	----	----	----	----	----	----	----	----	----	----	----	----	----	----	----	----	----	----	----	----	----	----	----	----	----	----	----	----	----	----	----	----	----	----	----	----	----	----	----	----	----	----	----	----	----	----	----	----	----	----	----	----	----	----	----	----	----	----	----	----	----	----	----	----	----	----	----	----	----	----	----	----	----	----	----	----	----	----	----	----	----	----	----	----	----	----	----	----	----	----	----	----	----	----	----	----	----	----	----	----	----	----	----	----	----	----	----	----	----	----	----	----	----	----	----	----	----	----	----	----	----	----	----	----	----	----	----	----	----	----	----	----	----	----	----	----	----	----	----	----	----	----	----	----	----	----	----	----	----	----	----	----	----	----	----	----	----	----	----	----	----	----	----	----	----	----	----	----	----	----	----	----	----	----	----	----	----	----	----	----	----	----	----	----	----	----	----	----	----	----	----	----	----	----	----	----	----	----	----	----	----	----	----	----	----	----	----	----	----	----	----	----	----	----	----	----	----	----	----	----	----	----	----	----	----	----	----	----	----	----	----	----	----	----	----	----	----	----	----	----	----	----	----	----	----	----	----	----	----	----	----	----	----	----	----	----	----	----	----	----	----	----	----	----	----	----	----	----	----	----	----	----	----	----	----	----	----	----	----	----	----	----	----	----	----	----	----	----	----	----	----	----	----	----	----	----	----	----	----	----	----	----	----	----	----	----	----	----	----	----	----	----	----	----	----	----	----	----	----	----

Contract No. 13/WSD/16 - Mainlaying in Tseung Kwan O



Contract No. 13/WSD/16 - Mainlaying in Tseung Kwan O

Original Contract due
Date: 18/5/2021

Dividing Date:
14/4/2022

CE28:
20/5/2022

CE51:
6/10/2022

CE57(Section II):
7/2/2023

CE67(Section II):
27/7/2023

Planned Completion
IWPR A-D: 10/11/2023

ID	ID	Task Name	Duration	Start	Finish	Task Calendar	Predecessors	Successors	Free Slack	Total Slack	Duration	% Complete	Actual Start	Actual Finish																																																				
868	868	Backfill at T23+64 after completion of Water Sampling Test	1 day	15/5/19	15/5/19	HK Working Day	867	869	0 days	0 days 1 day	100%		15/5/19	15/5/19																																																				
	869	Handover Portion J to WSD Region	1 day	15/5/19	15/5/19	HK Working Day	868		0 days	0 days 1 day	100%		15/5/19	15/5/19																																																				