

Appendix B

Overview of Mainlaying in Tseung Kwan O

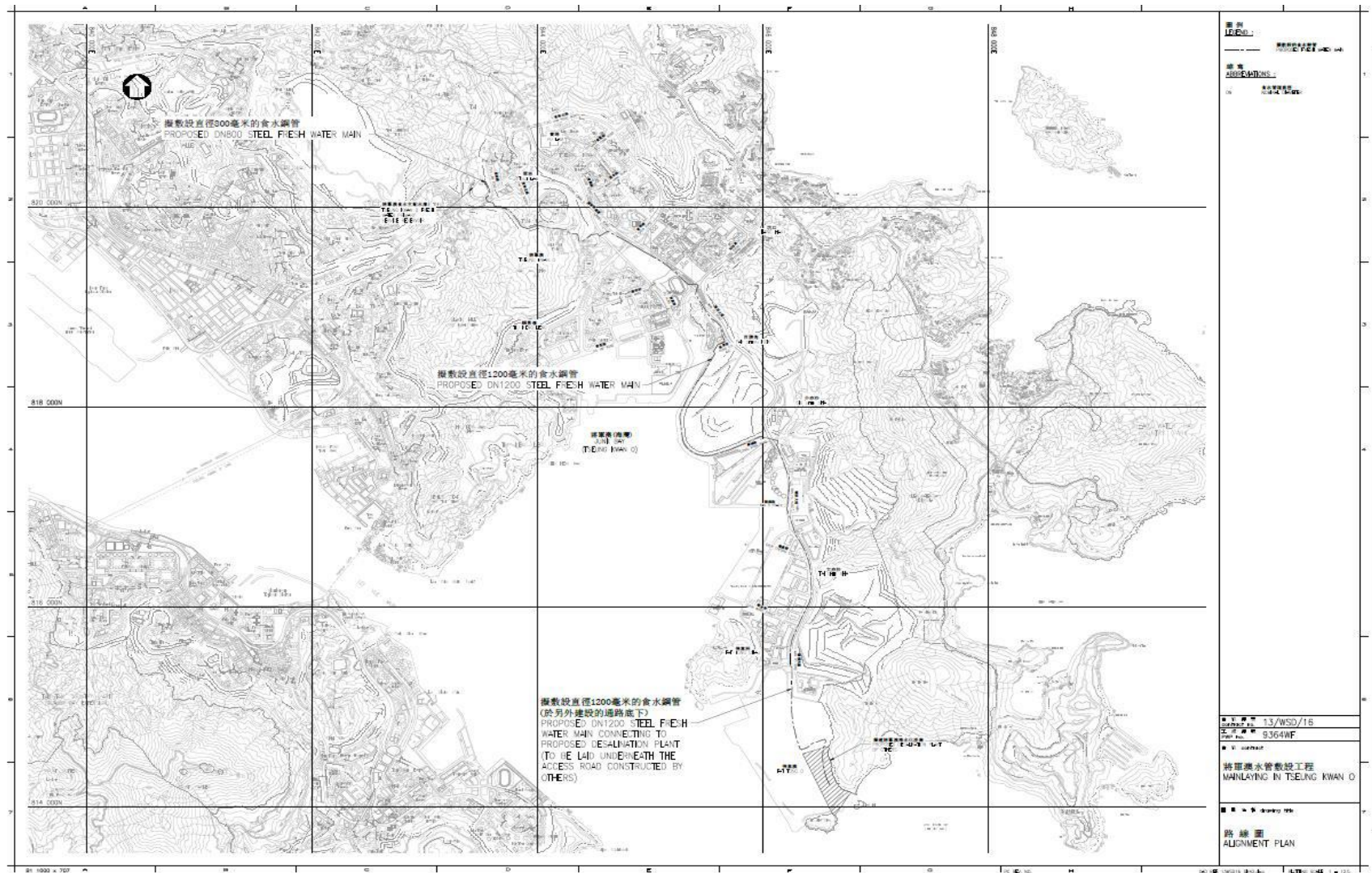


Figure B1. Overview of Mainlaying in TKO



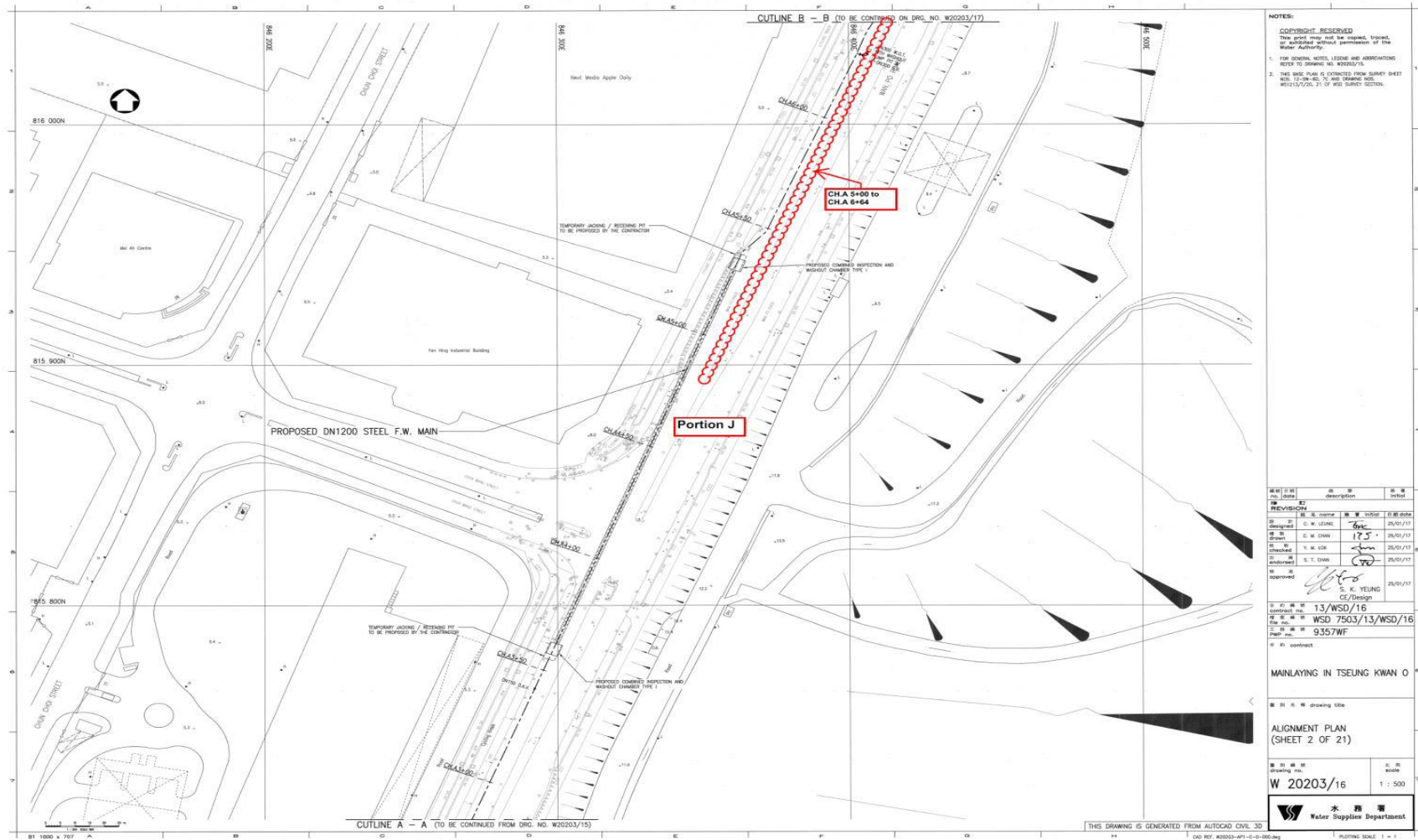
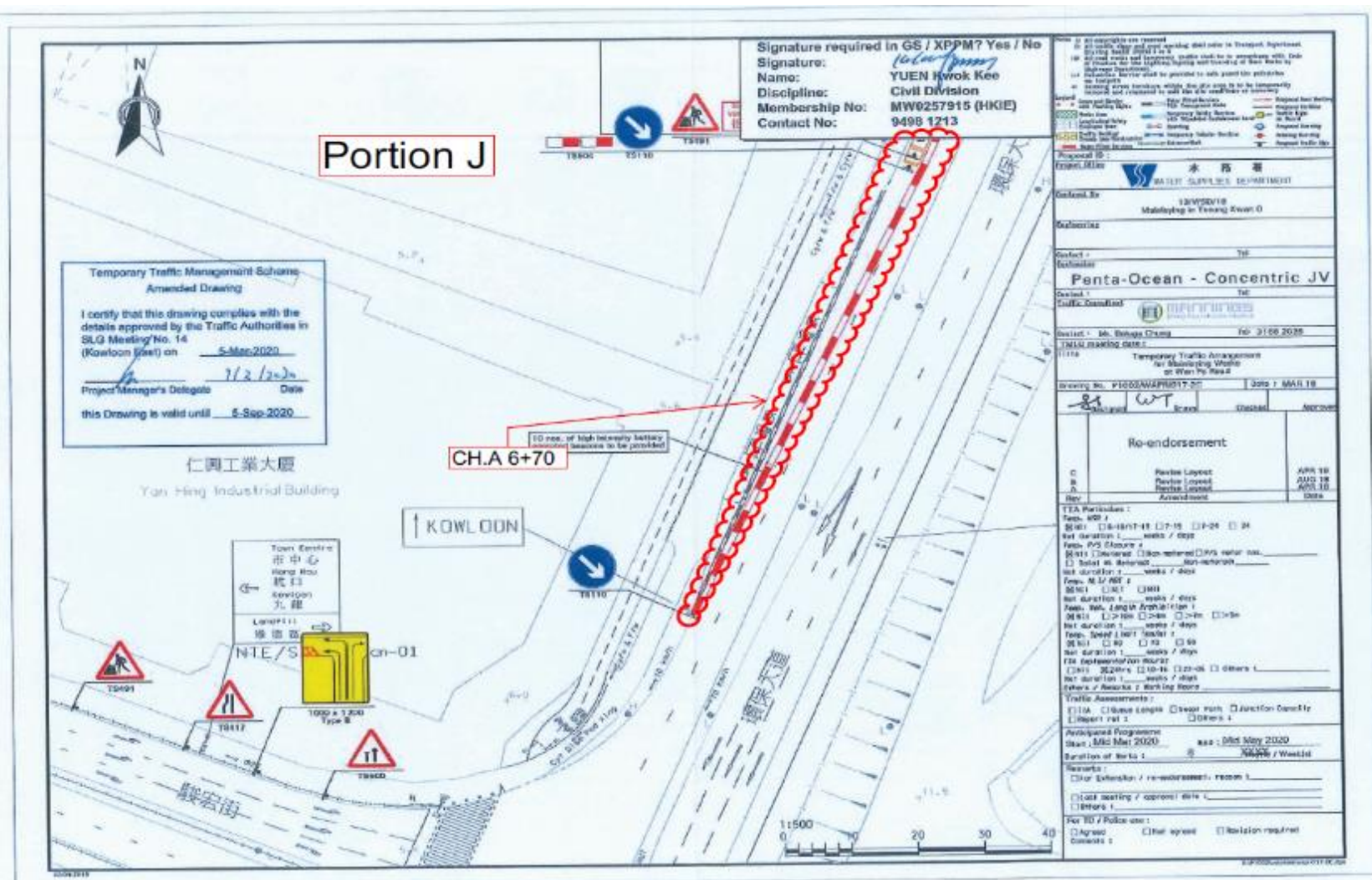


Figure B2. Location Plan for Portion J - CH.A 5+00 to CH.A 6+64





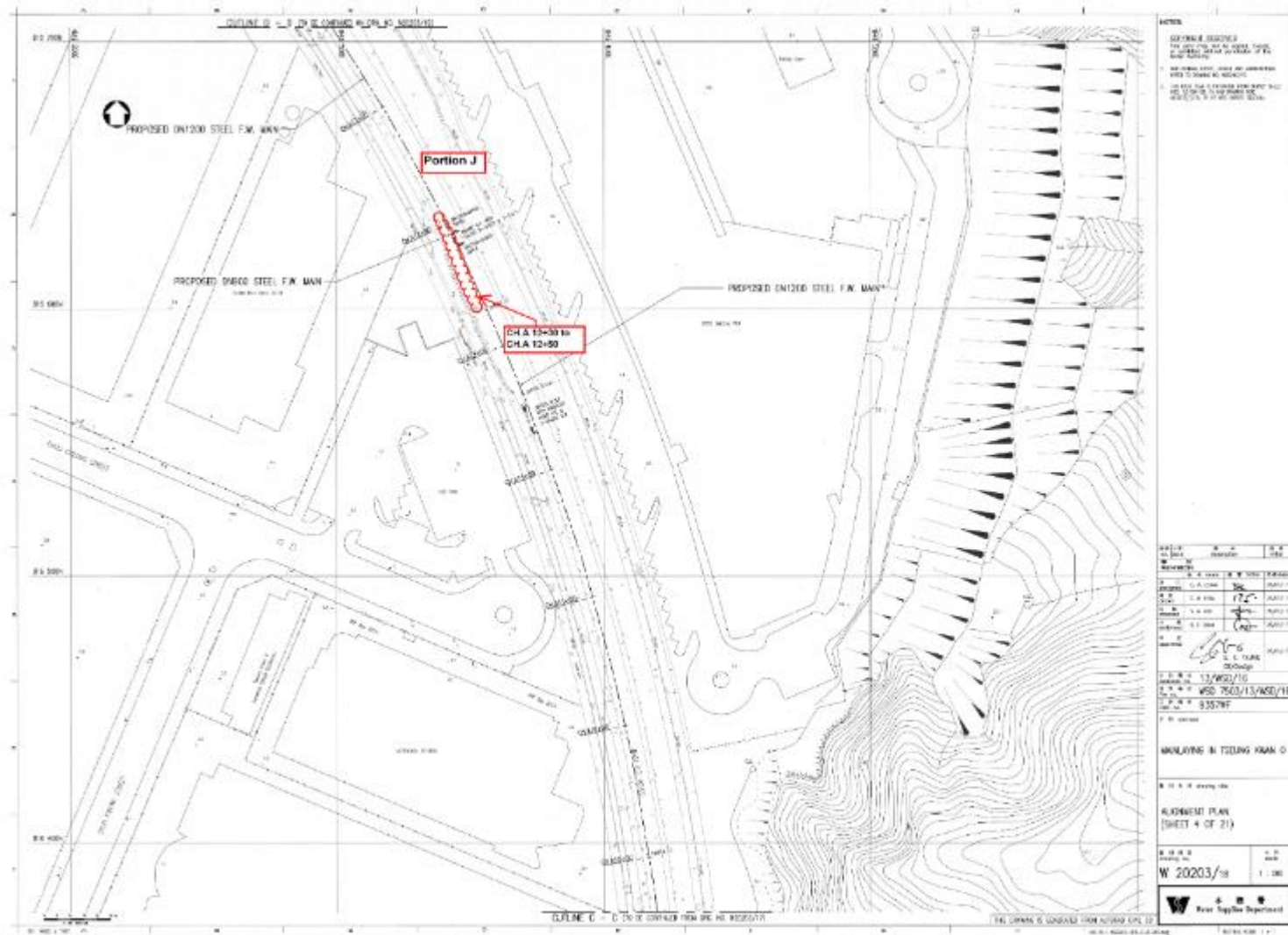


Figure B5. Location Plan for Portion J - CH.A 12+30 to CH.A 12+50

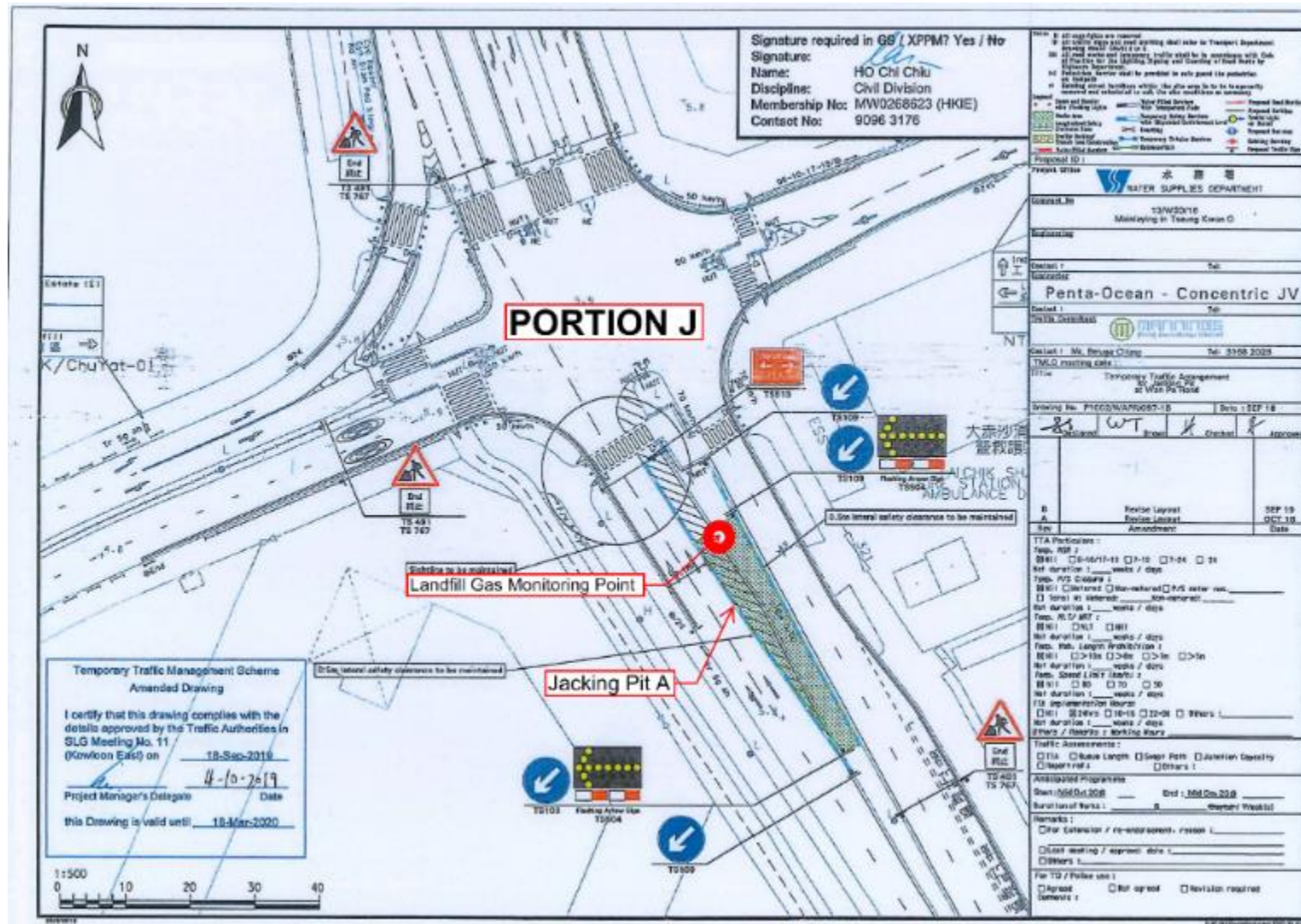


Figure B6. Location Plan for Portion J – CH. A13+50 to CH.A 14+00 (Pit A)

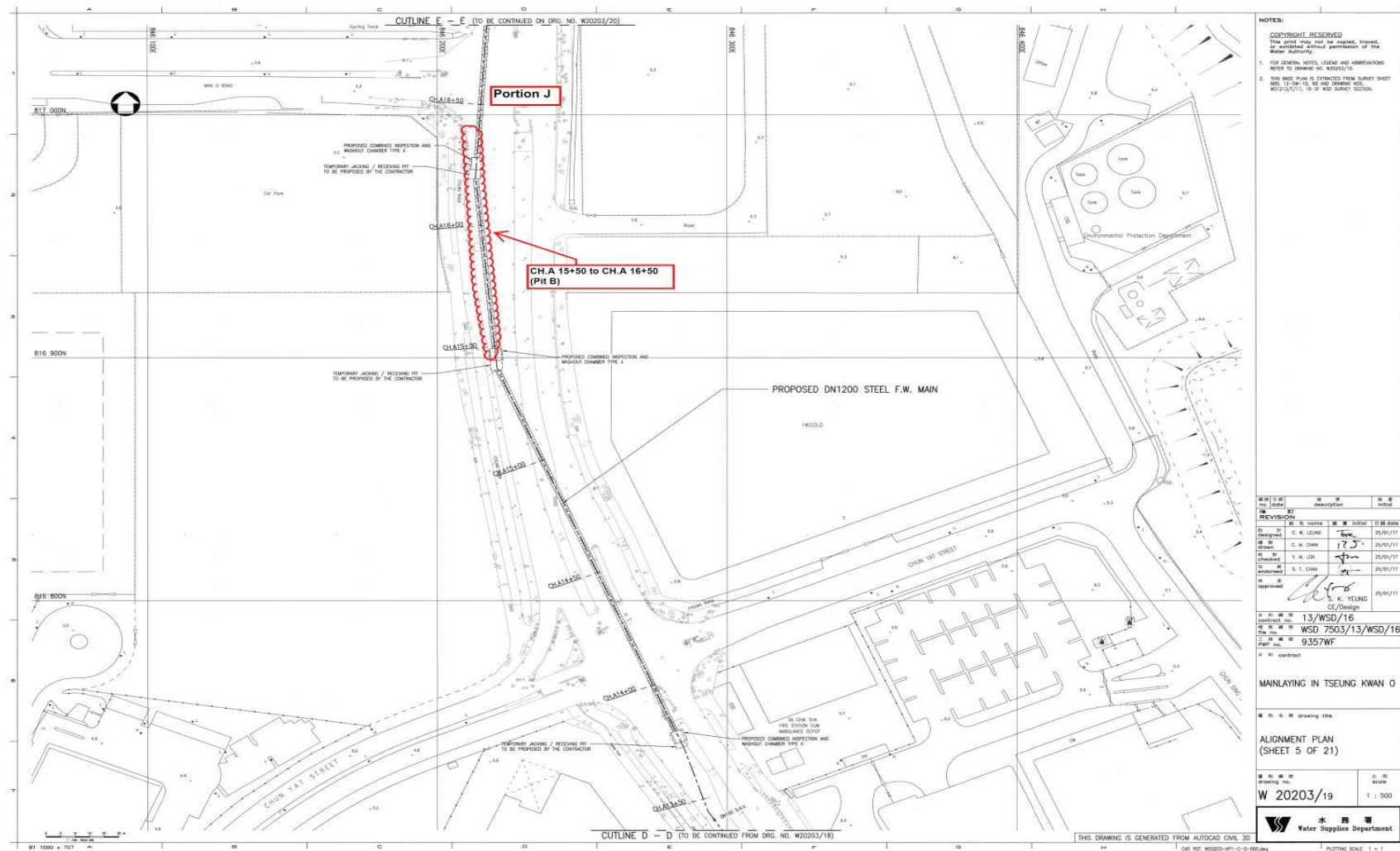


Figure B7 Location Plan for Portion J – CH. A15+50 to CH.A 16+50 (Pit B)

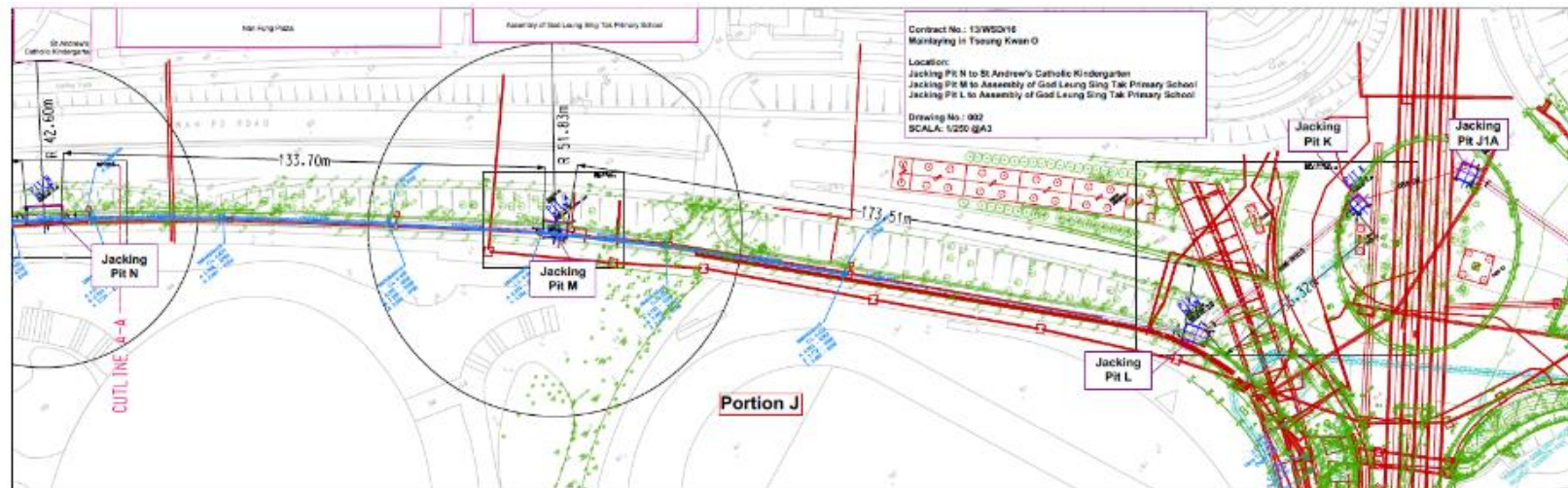


Figure B8a. Location Plan for Portion J – Pit L-M-N, K, J1A



Figure B8b. Location Plan for Portion J – Pit N-O-P

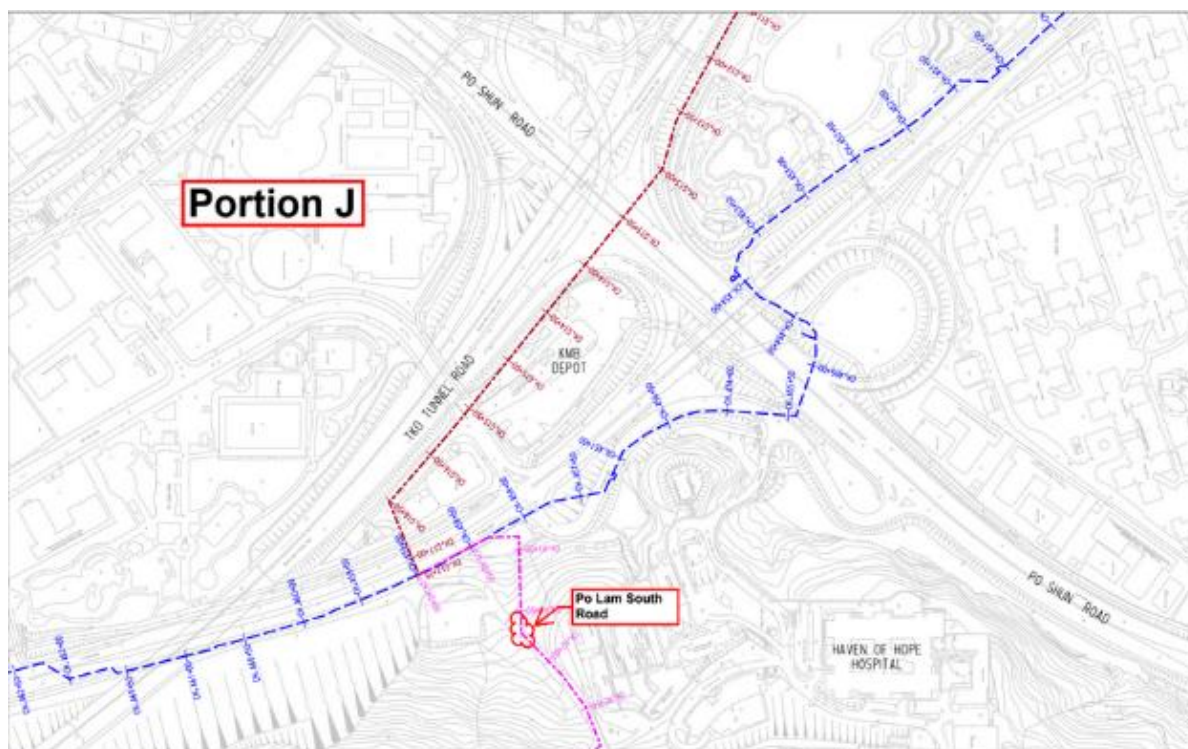


Figure B9a. Location Plan for Mau Wu Tsai 1

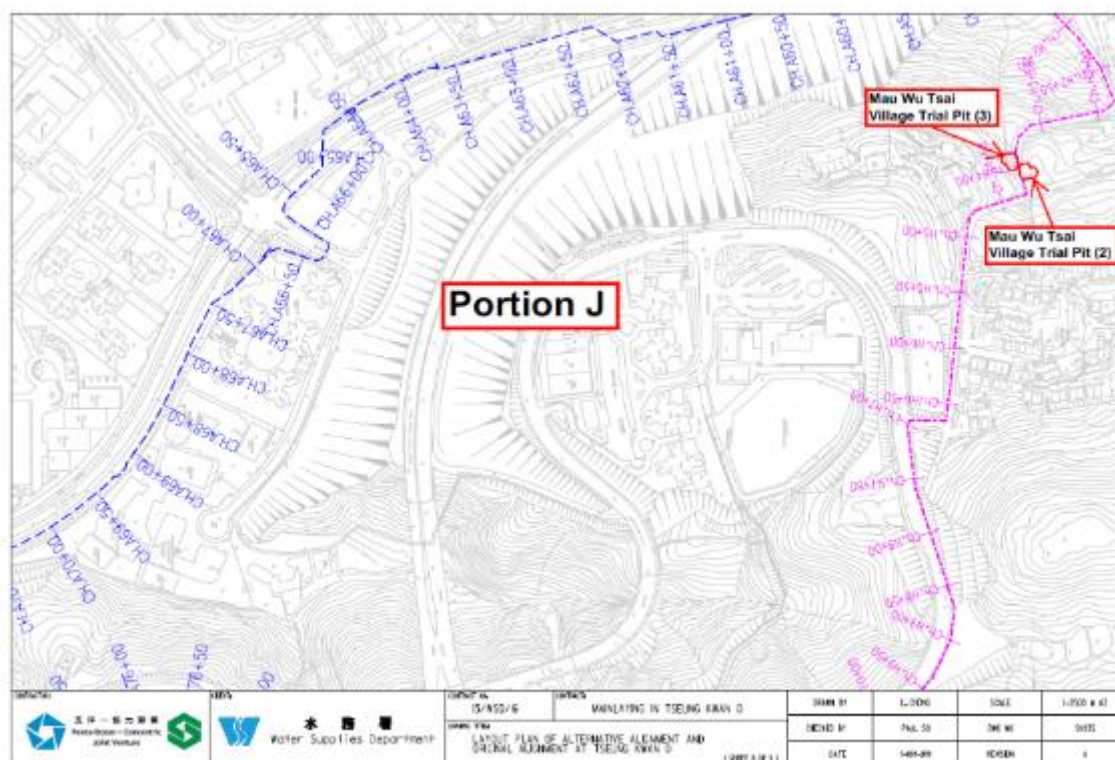


Figure B9b. Location Plan for Mau Wu Tsai 2 & 3

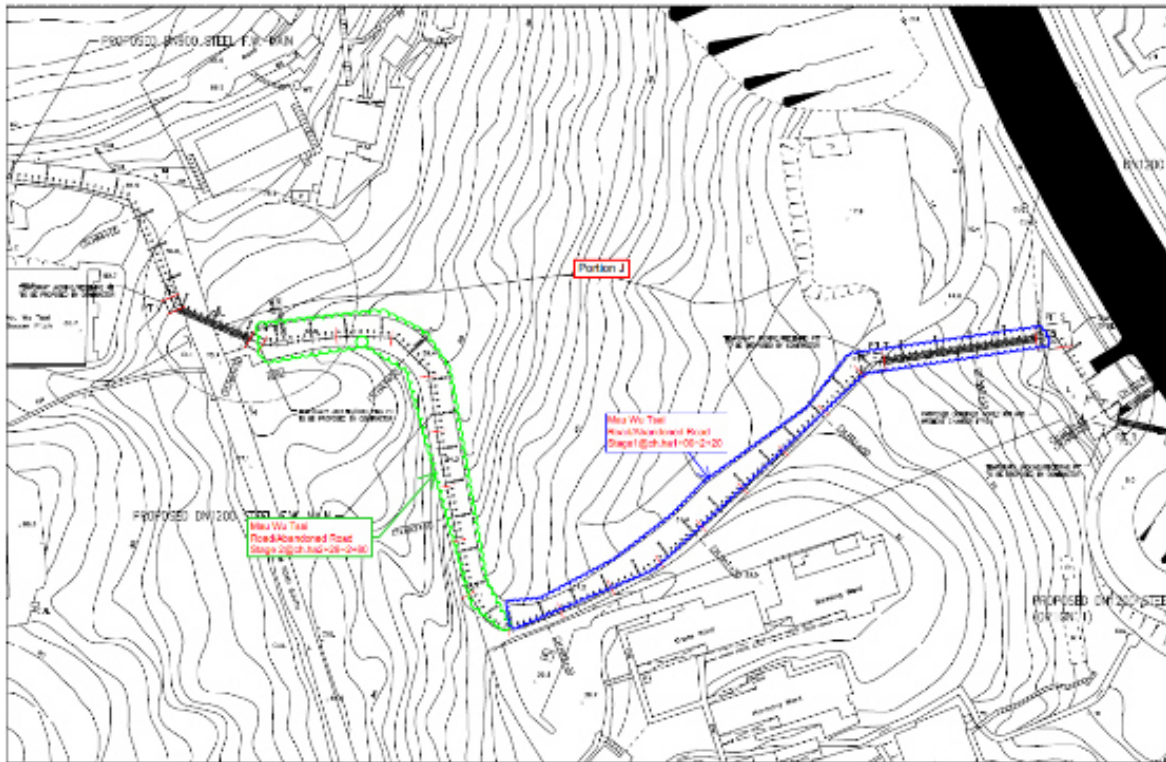


Figure B9c. Abandoned Mau Wu Tsai Road



Figure B10. Monitoring Location – Po Lam South Road

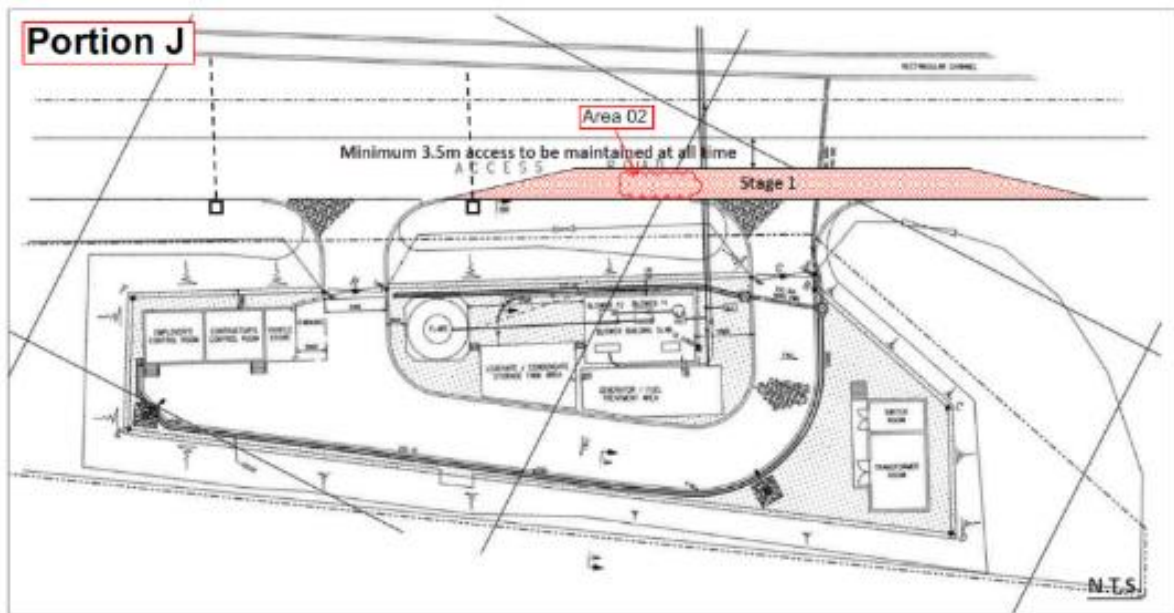


Figure B11. Monitoring Location – Area A02

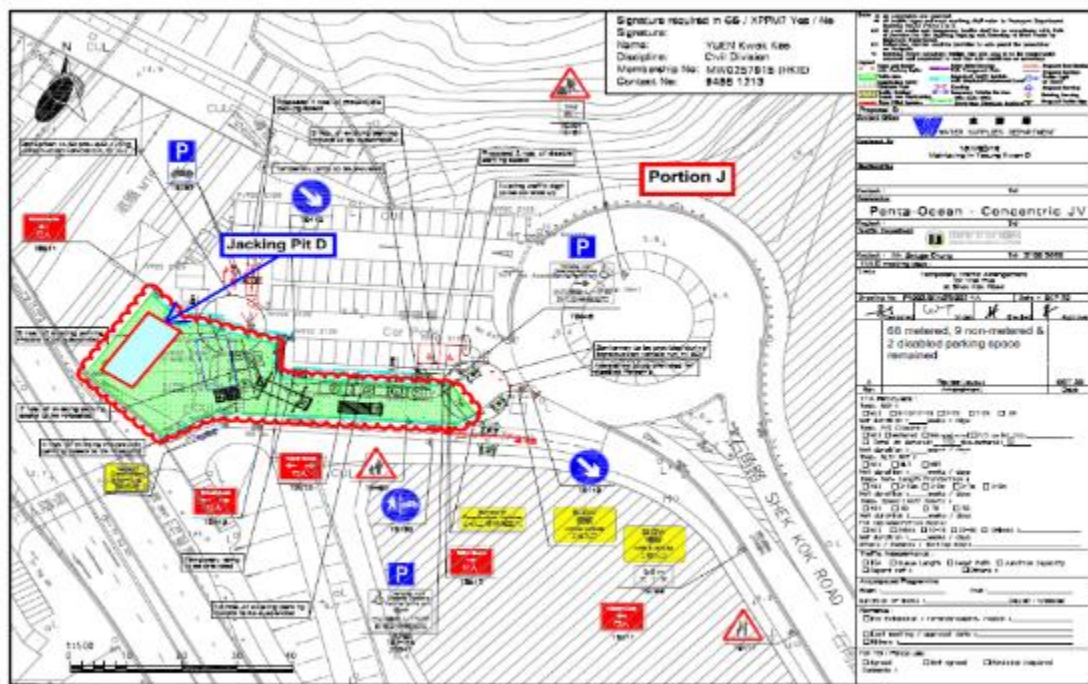


Figure B12. Location Plan for Jacking Pit D

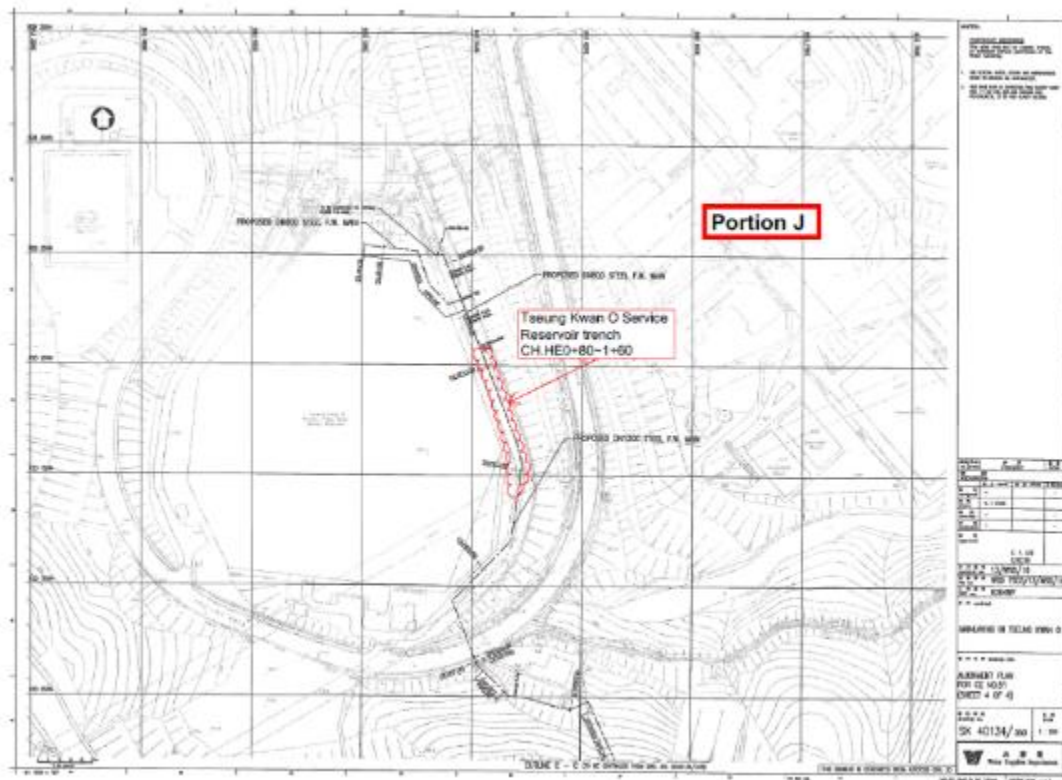


Figure B13. Location Plan for CH.HE0+80-1+60

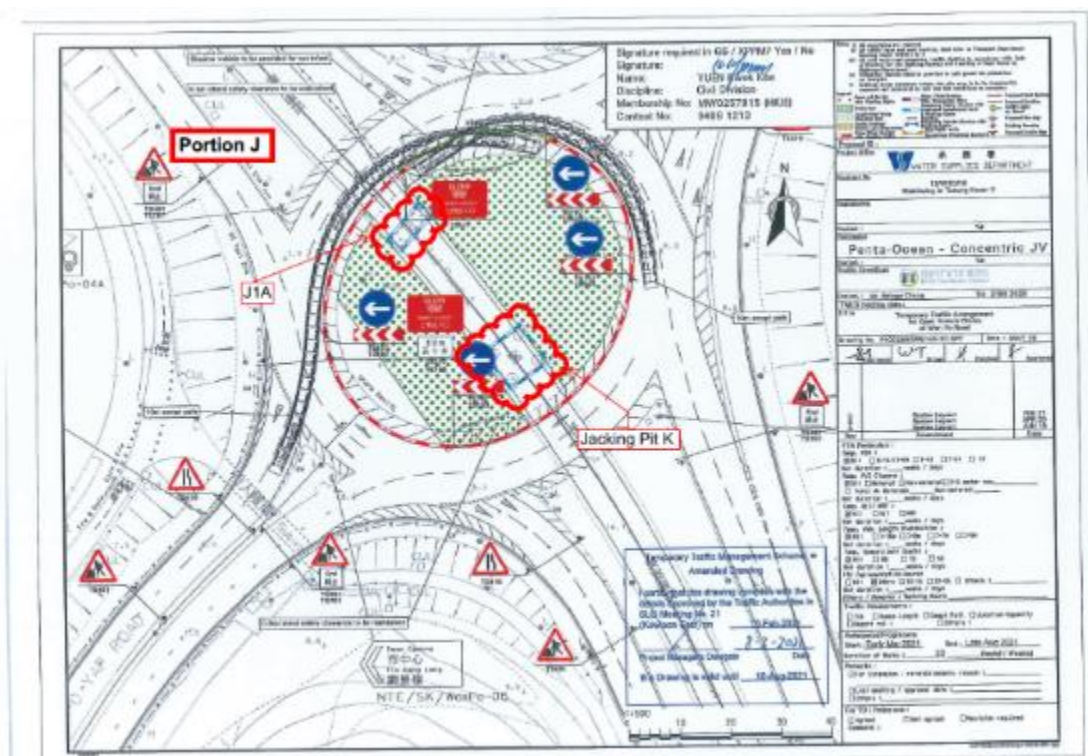


Figure B14. Location Plan for Pit K

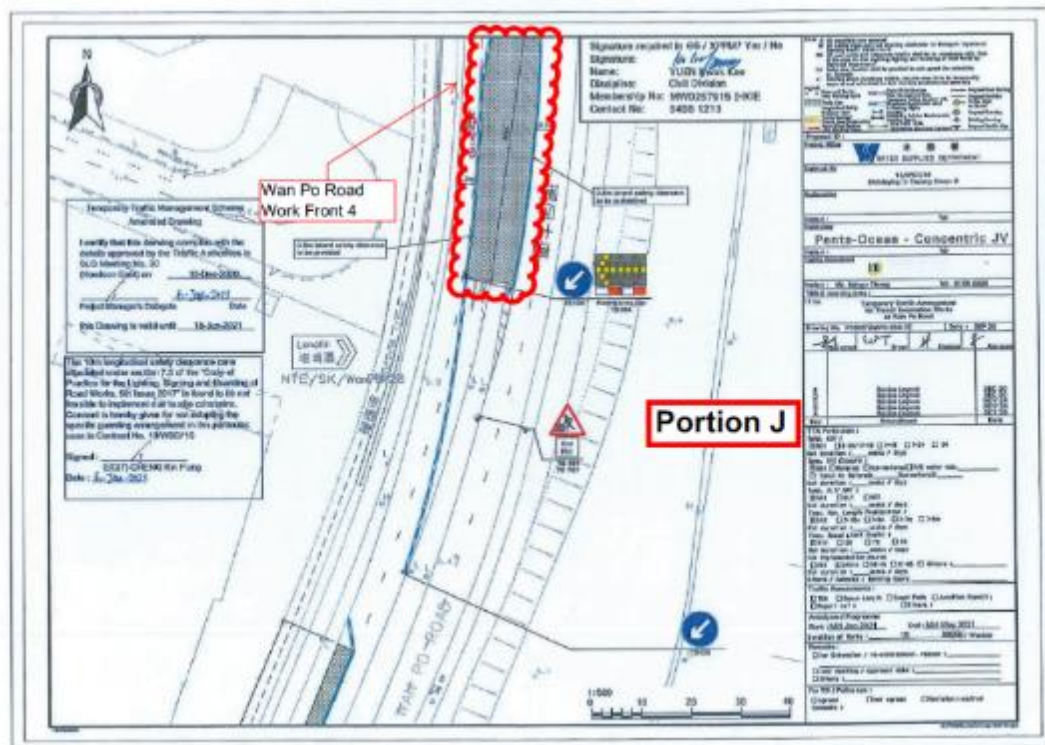


Figure B15. Location Plan for Wan Po Road 4

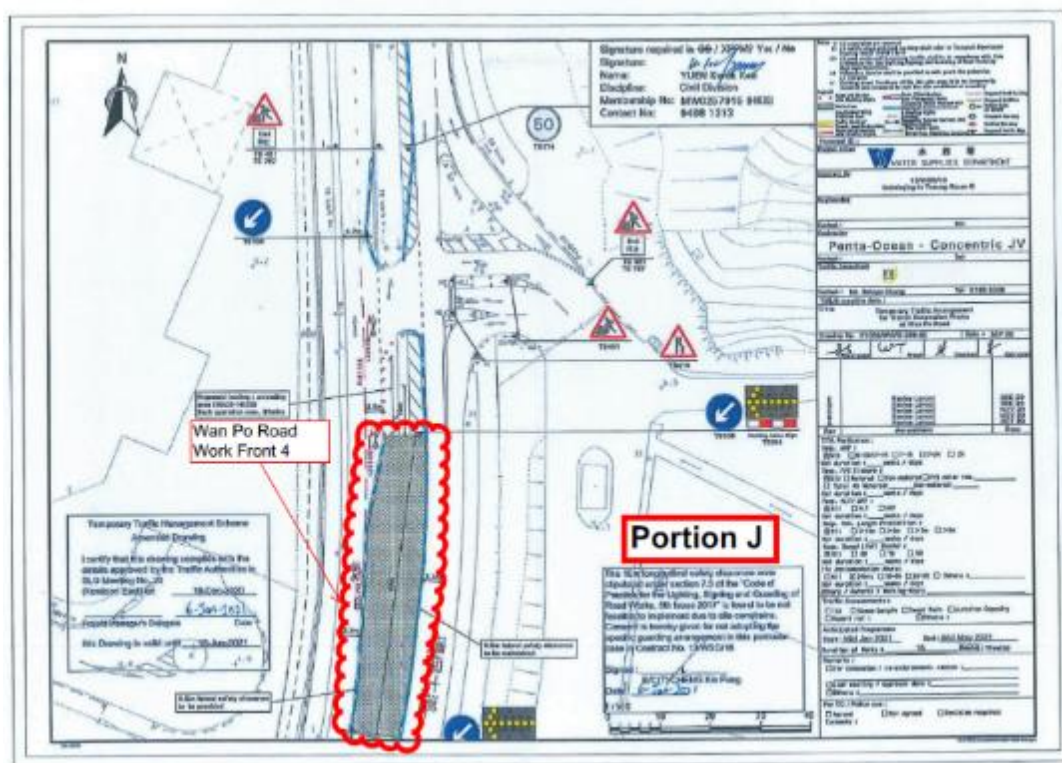
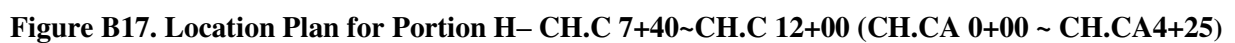


Figure B16. Location Plan for Wan Po Road 4



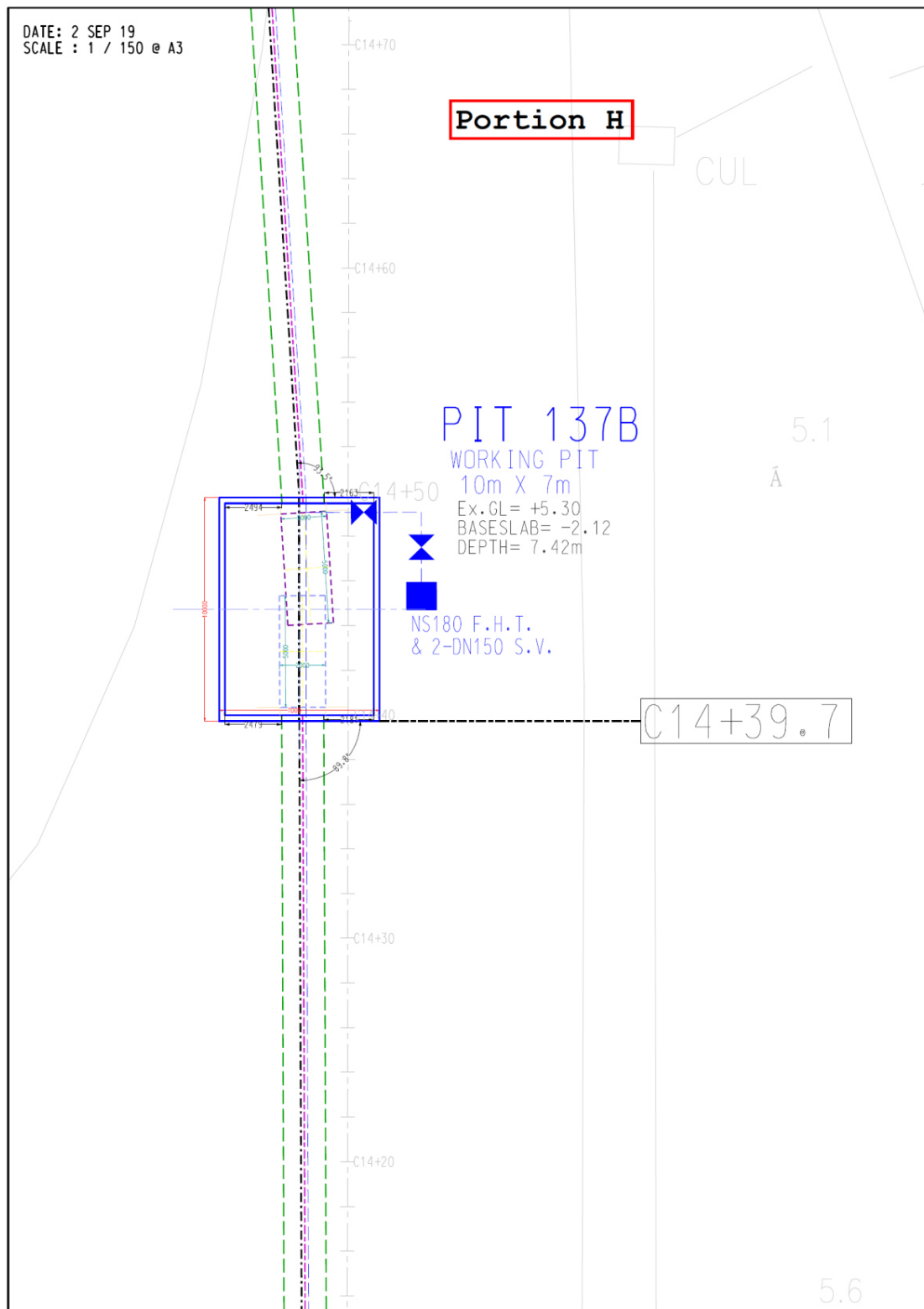


Figure B18. Location Plan for Portion H- Pit 137B

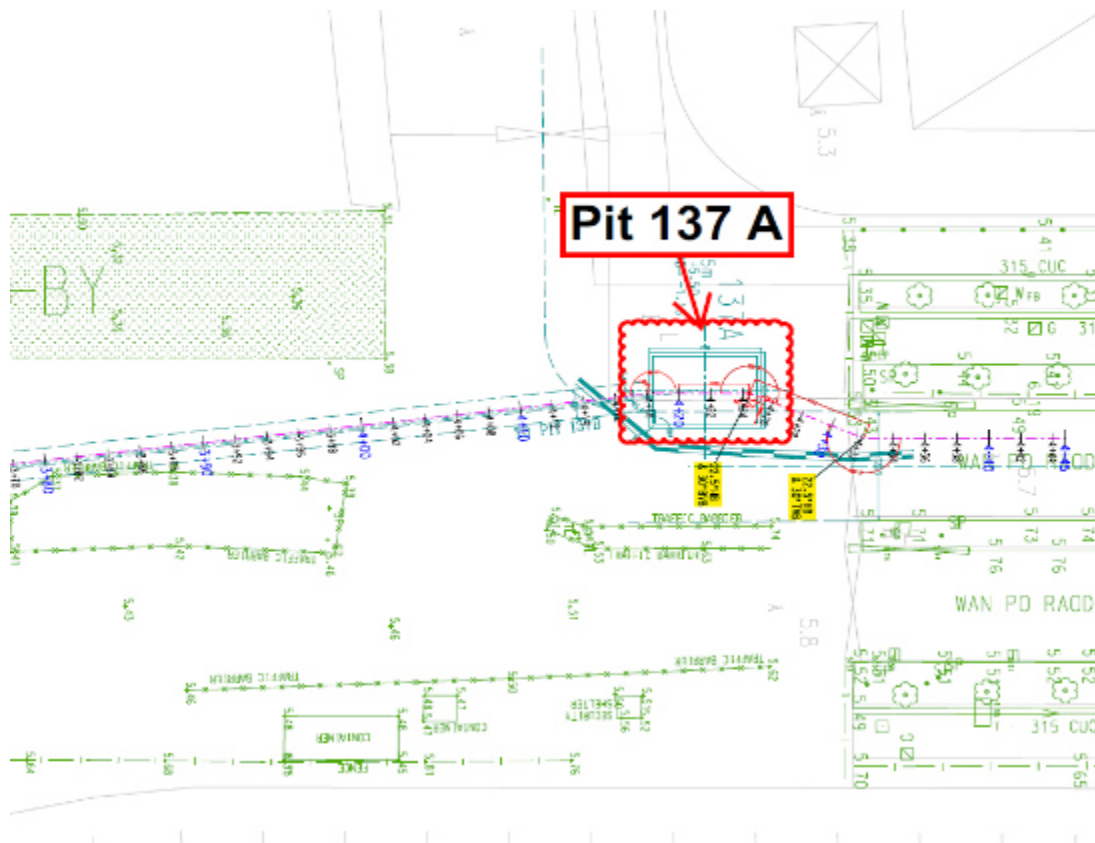


Figure B19. Location Plan for Portion H- Pit 137A

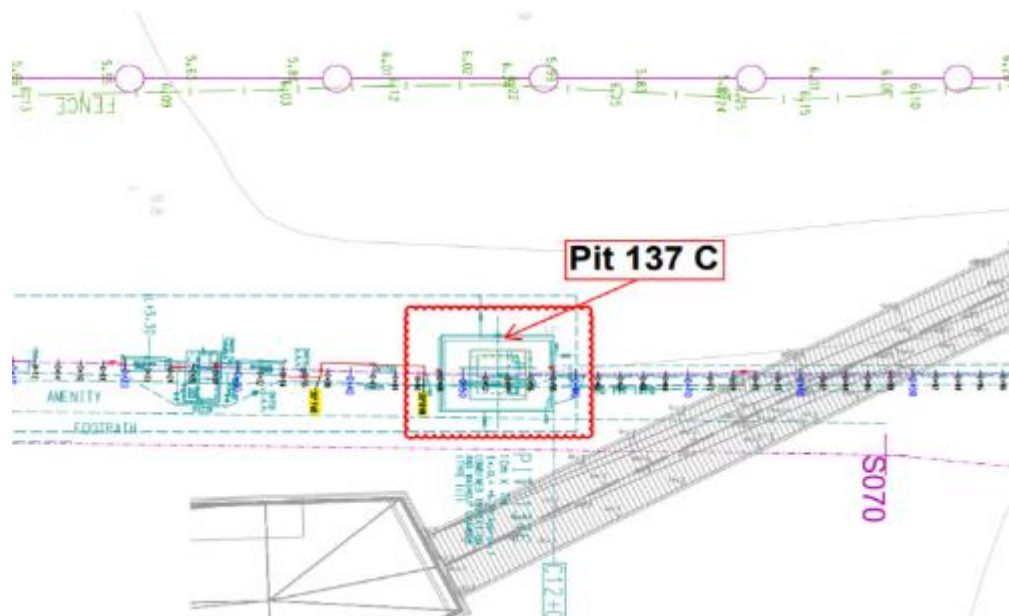


Figure B20 Location Plan for Portion H- Pit 137C